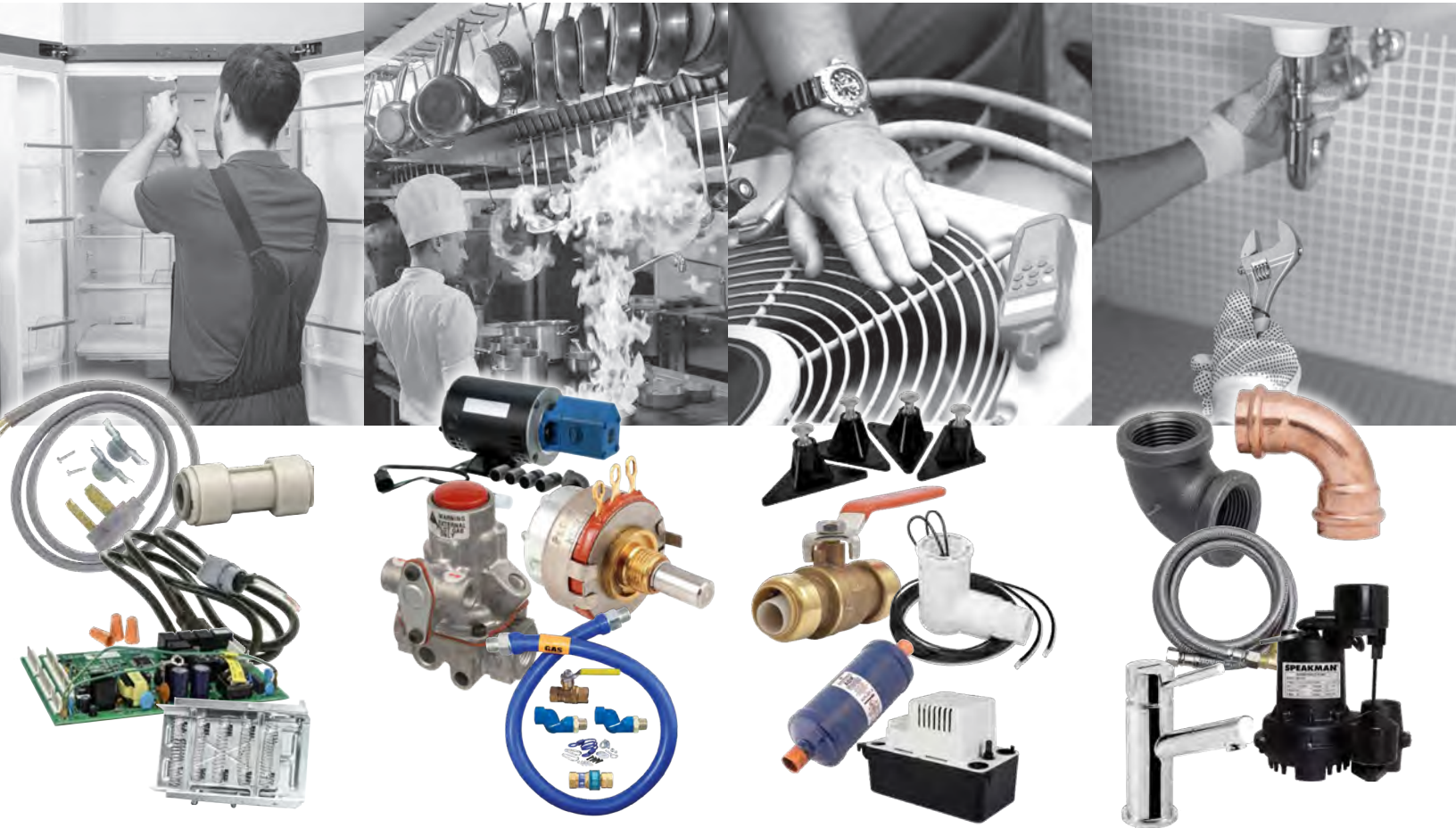


BEST SELLERS

2024 Parts Catalog

A selection of top-selling products from more than 3 million parts available nationwide.





APPLIANCE PARTS



DISHWASHERS



WD15X10014



WD21X10060



WD26X10013



154827601



5304517203



8194001



W10712395



W10195416V



W10685193



WP8565925



W10876537



10023852



0063120



1746570100



1750900300



1510600400



1762650200



524285P

General Electric

PART #	VENDOR CODE	DESCRIPTION
WD15X10014	GEH	WATER INLET VALVE
WD21X10060	GEH	DISHWASHER DRAIN SOLENOID KIT
WD26X10013	GEH	DISHWASHER MOTOR & PUMP ASSEMBLY
WX09X70910	GEH	DISHWASHER POWER CORD - 5'4 UNIVERSAL

Electrolux

PART #	VENDOR CODE	DESCRIPTION
154827601	WCI	GASKET
A00126401	WCI	DRAIN PUMP
5304517203	WCI	SPRAY ARM

Whirlpool

PART #	VENDOR CODE	DESCRIPTION
8194001	WPL	LINK
W10518394	WPL	HEATER
W10282479	WPL	AFFRESH D2 DISH/DISPOSAL
W10712395	WPL	ADJUSTER
W10195416V	WPL	WHEEL
W10685193	WPL	FITTING
675808	WPL	MANIFOLD
WP8565925	WPL	STOP
W10861000	WPL	DISPENSER
W10876537	WPL	PUMP-DRAIN
W11175771	WPL	VALVE-INLT

Bosch

PART #	VENDOR CODE	DESCRIPTION
10023852	BSH	WATER INLET VALVE
12008381	BSH	CIRCULATION MOTOR & HEATER
0063120	BSH	DRAIN PUMP

BEKO

PART #	VENDOR CODE	DESCRIPTION
1746570100	BEK	DRAIN PUMP
1512300400	BEK	DETERGENT DISPENSER
1750900300	BEK	DOOR LOCK
1510600400	BEK	LOCK ASSY
1762650200	BEK	MOTOR & PUMP ASSY

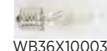
Fisher & Paykel

PART #	VENDOR CODE	DESCRIPTION
524285P	F-P	MOTOR ROTOR ASSY
524922P	F-P	MOTOR ROTOR ASSY

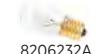
MICROWAVES



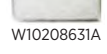
WB25X10019



WB36X10003



8206232A



W10208631A

General Electric

PART #	VENDOR CODE	DESCRIPTION
WB25X10019	GEH	MICROWAVE HALOGEN BULB; 20W 120V
WB36X10003	GEH	MICROWAVE BULB - 40W

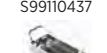
Whirlpool

PART #	VENDOR CODE	DESCRIPTION
8206232A	WPL	40W LIGHT BULB, MW
W10208631A	WPL	MHC GREASE FILTER

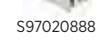
RANGE HOODS



S99110437



S97007696



S97012248



S97020888

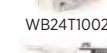
Broan

PART #	VENDOR CODE	DESCRIPTION
S99110437	BRO	LIGHT LENS
S97007696	BRO	GREASE FILTER 10 1/4" X 8 1/2"
S97012248	BRO	MOTOR/FAN BLADE/BRACKET
S97020888	BRO	HEATING ELEMENT

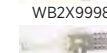
OVENS AND RANGES



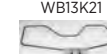
WB24T10025



WB24X9998



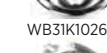
WB13K21



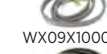
WB44X5082



WB44K5012



WB44X200



WB44T10010



WB44T10011



WB31T10010



WB31T10011



WB31K10265



WX09X10006



WB31K10266



WX09X10006



WB30M1

General Electric

PART #	VENDOR CODE	DESCRIPTION
WB24T10025	GEH	ELEC RNGE SRFC E BRNER CNTRL SWTCH2500W
WB24T10029	GEH	SURFACE UNIT SWITCH
WB2X9998	GEH	IGNITER OVEN
WB13K21	GEH	RANGE OVEN IGNITER
WB2X9154	GEH	RANGE OVEN IGNITER
WB44X5082	GEH	RANGE OVEN BAKE ELEMENT 236V
WB44K5012	GEH	RANGE OVEN BAKE ELEMENT
WB44X200	GEH	RANGE OVEN BAKE ELEMENT
WB44T10010	GEH	RANGE OVEN BAKE ELEMENT
WB44T10011	GEH	RANGE OVEN BAKE ELEMENT
WB31T10010	GEH	6 INCH CHROME BURNER BOWL - ELEC
WB31T10011	GEH	8 INCH CHROME BURNER BOWL - ELEC
WB31K10265	GEH	RANGE 6 BURNER BOWL
WB31K10266	GEH	RANGE 8 CHROME BURNER BOWL
WX09X10006	GEH	4'40AMP 3 WIRE RANGE CORD
WX09X10035	GEH	4' 40AMP 4 WIRE RANGE CORD
WB30M1	GEH	6" SURFACE ELEMENT
WB30M2	GEH	8" SURFACE ELEMENT

GARBAGE DISPOSALS



84211601

Whirlpool

PART #	VENDOR CODE	DESCRIPTION
84211601	WPL	1/2 HP CONTINUOUS FEED
84211602	WPL	1/2 HP CONTINUOUS FEED W/CORD

OVENS AND RANGES



Electrolux

PART #	VENDOR CODE	DESCRIPTION
5303935066	WCI	OVEN IGNITOR
5303935058	WCI	TERMINAL BLOCK KIT
316436001	WCI	SWITCH
316048414	WCI	PAN-SURFACE ELEMENT
316048413	WCI	PAN-SURFACE ELEMENT
316075103	WCI	ELEMENT
5303051519	WCI	ELEMENT-BAKE
318372210	WCI	ELEMENT
316442300	WCI	ELEMENT
3051162	WCI	GLIDE
3051163	WCI	GLIDE

Whirlpool

PART #	VENDOR CODE	DESCRIPTION
330031	WPL	TERM.BLK.REPLACE/PKY
12001676	WPL	RANGE SURFACE ELEMENT RECEPTACLE KIT
12400035	WPL	IGNITER KIT
4342528	WPL	IGNTR-OVEN
WPW10196406	WPL	PAN,COMBINATION 6 CHROME
WPW10196405	WPL	BURNER DRIP BOWL 8 INCH
8009	WPL	40 WATT APPLIANCE BULB
WP3149404	WPL	SWITCH-INF
WP3149400	WPL	SWITCH-INF
W10779716	WPL	ELMNT-BAKE

REFRIGERATION

General Electric

PART #	VENDOR CODE	DESCRIPTION
WR55X10025	GEH	REFRIGERATOR TEMPERATURE SENSOR
XWFE	GEH	REFRIGERATION WATER FILTER
MWFP	GEH	WATER FILTER CANISTER
WR60X31522	GEH	EVAPORATOR FAN MOTOR
WR50X60	GEH	THERMO PKG
WR30X10093	GEH	REFRIGERATOR ICE MAKER KIT
WR62X10055	GEH	REFRIGERATOR DISPENSER SOLENOID ASSEMBLY
WR51X10055	GEH	REFRIGERATOR DEFROST HEATER ASSEMBLY
WR60X26866	GEH	FAN DC FF EVAP
WR60X10185	GEH	REFER DC EVAPORATOR FAN MOTOR
WR50X10068	GEH	REFRIGERATOR DEFROST THERMOSTAT
WX08X10006	GEH	UNIVERSAL 8" REFRIGERATOR PEX WATER LINE
WR17X11653	GEH	REFRIGERATOR DISPENSER DOOR FLAP - BLACK

LG

PART #	VENDOR CODE	DESCRIPTION
TCA38151706	L-G	COMPRESSOR,SET ASSEMBLY
AEQ73449909	L-G	ICEMAKER



REFRIGERATION



Electrolux

PART #	VENDOR CODE	DESCRIPTION
ULTRAWF	WCI	WATER FILTER
WF3CB	WCI	WATER FILTER
FPPWFU01	WCI	WATER FILTER
242252702	WCI	VALVE
215846602	WCI	TIMER-DEFROST
240323001	WCI	BIN-DOOR
240534901	WCI	RACK-DOOR
240337901	WCI	BIN
240338001	WCI	BIN
5303918277	WCI	ICEMAKER KIT
241798231	WCI	ICEMAKER
240337103	WCI	PAN-CRISPER
242303001	WCI	DAMPER ASSY

Whirlpool

PART #	VENDOR CODE	DESCRIPTION
4317943	WPL	ICEMAKER
4318046	WPL	VALVE-INLT
4318047	WPL	VALVE-INLT
W10408179	WPL	VALVE-INLT
8201799	WPL	START-DEV
8201786	WPL	START-DEV
W11658802	WPL	ICEMAKER
D7824706Q	WPL	ICE MAKER
W10873791	WPL	ICEMAKER
1129313	WPL	ICEMAKER KIT-FIELD INSTA
W10884390	WPL	ICEMAKER
2198597	WPL	ICE MAKER ASSY (R)-120V/
W10311524	WPL	SXS REF RPLCMNT AIR FILT
W10619951	WPL	TUBE-DRAIN
WPW10384183	WPL	THERMISTOR
WPW10143759	WPL	DRIER-UV
819043	WPL	HEAT-PROBE
EDR1RXD1	WPL	FILTER1, SINGLE

BEKO

PART #	VENDOR CODE	DESCRIPTION
5931630100	BEK	ICEMAKER
4946650600	BEK	MULLION FLIPPER
4911630400	BEK	ICEMAKER
4874960100	BEK	WATER FILTER
4934269500	BEK	RELAY BOARD

WASHERS AND DRYERS

General Electric

PART #	VENDOR CODE	DESCRIPTION
WX09X10002	GEH	4' 30AMP 3 WIRE DRYER CORD
WX09X10018	GEH	4' 30AMP 4 WIRE DRYER CORD
WE3M26	GEH	DRYER FRONT DRUM BEARING
WE49X20697	GEH	DRYER BEARING REPAIR KIT - TOP LOAD
WE1M654	GEH	DRYER TIMER KNOB - WHITE
WE03X25285	GEH	KNOB MAIN ASM
WE03X23881	GEH	DRYER LINT FILTER
WE4M533	GEH	DRYER TIMER
WE03X29897	GEH	BELT DRIVE
WE03X37317	GEH	DRYER TOP DRUM BEARING GREEN 2 PK
WE04X28977	GEH	DRYER DOOR SWITCH
WE03X37318	GEH	DRYER TOP DRUM BEARING WHITE 2 PK
WH03X30517	GEH	WASHER MODE SHIFTER
WH08X37937	GEH	WASHER LID LOCK W/STRIKER



WASHERS AND DRYERS



WH1X2727



WH01X10310



WH23X28418



WH41X10096



4681EA2001T



5220FR2075L



4581EL2002C



DC97-14486A



DC97-16782A



6602-001655



DC93-00634A



DC32-00007A



134511600



5304523155



5304528029

5304505004



80040



341241



285753A



4392065



279838



279834



4392065

General Electric

PART #	VENDOR CODE	DESCRIPTION
WH16X26910	GEH	ROD & SPRING ASM RIGHT - GREEN
WH01X27538	GEH	BELT DRIVE
WH16X26911	GEH	ROD & SPRING ASM LEFT - WHITE
WH1X2727	GEH	WASHING MACHINE TUB DAMPENING STRAP
WH01X10310	GEH	WASHING MACHINE KNOB - WHITE
WH23X28418	GEH	PUMP DRAIN ASM
WH13X26534	GEH	WATER VALVE GASKET ASM
WH41X10096	GEH	WASHER 4.5' CORRUGATED DRAIN HOSE

LG

PART #	VENDOR CODE	DESCRIPTION
4681EA2001T	L-G	MOTOR ASSEMBLY,AC,PUMP
5220FR2006H	L-G	VALVE ASSEMBLY,INLET
5220FR2075L	L-G	WASHER INLET WATER VALVE COLD
4581EL2002C	L-G	ROLLER ASSEMBLY
AGM75510755	L-G	DRYER DRUM ROLLER KIT 4 PK

Samsung

PART #	VENDOR CODE	DESCRIPTION
DC97-16350U	SAM	ASSY DAMPER; 27.6INCH, 5.0CF, 11.0?15%@250R
DC97-14486A	SAM	ASSY DUCT HEATER-MODULE; 27-DRYER,-
DC97-16782A	SAM	ASSY PLASTIC SUPPORTOR; 27-DRYER
DC47-00019A	SAM	HEATER DRY; AC240V, 5300W,CRNI,
6602-001655	SAM	BELT-TIMING GEAR; RUBBER, RED/ YEL,T2.4,W8,
DC93-00634A	SAM	DRYER IDLER PULLEY
DC32-00007A	SAM	DRYER THERMISTOR

Electrolux

PART #	VENDOR CODE	DESCRIPTION
5304436333	WCI	4WORMGEAR C500 GAL
134503600	WCI	BELT
137292700	WCI	BELT
134511600	WCI	V-BELT
5304523155	WCI	DRYER DRUM ROLLER
5303931775	WCI	DRYER GAS VALVE COIL KIT
5304528029	WCI	WASHER INLET WATER VALVE
5304505004	WCI	WASHER BELLOW

Whirlpool

PART #	VENDOR CODE	DESCRIPTION
80040	WPL	WASHER AGITATOR DOGS
341241	WPL	BELT DRIVE POLY V
285753A	WPL	COUPLING
279838	WPL	ELEMENT
279816	WPL	CUTOFF-TML
WP3392519	WPL	FUSE-THRML
W10135699	WPL	AFFRESH WASHER TUB CLEAN
4392067	WPL	REPAIR-DYR
279834	WPL	COIL-VALVE
W10721967	WPL	CAM
279769	WPL	CUTOFF-TML
4392065	WPL	NORM REPAIR
349241T	WPL	SUPPORT
12001541	WPL	DRUM ROLLER/WASHER ASSY.

Whirlpool

PART #	VENDOR CODE	DESCRIPTION
285785	WPL	CLUTCH
WP3387747	WPL	ELEMENT
W11481722	WPL	ACTUATOR
W10734521	WPL	SLIDER
WPW10314173	WPL	SUPPORT
W10913953	WPL	ACTUATOR
W10528947	WPL	HUB
W10837240	WPL	BRACKET
W11130362	WPL	SUSPENSION
W11239857	WPL	BELT
WP3406107	WPL	SWITCH-DOR
W10780045	WPL	SUSPENSION
W10780048	WPL	SUSPENSION

Speed Queen

PART #	VENDOR CODE	DESCRIPTION
37575	SPE	DRYER SUSPENSION SPRING
205222	SPE	WASHER LID LOCK
D518649	SPE	DRYER THERMAL FUSE
964P3	SPE	DRYER HEATING ELEMENT
38174	SPE	WASHER DRIVE BELT
RB170002	SPE	DRYER MAINTENANCE REPAIR KIT
D518838	SPE	DRYER HEATING ELEMENT
203741	SPE	WASHER INLET WATER VALVE
D510708P	SPE	DRYER DRUM ROLLER
D511255P	SPE	DRYER DRUM BELT
205547P	SPE	WASHER INLET WATER VALVE
204659P	SPE	WASHER CONTROL BOARD

Fisher & Paykel

PART #	VENDOR CODE	DESCRIPTION
479595	F-P	WASHER DRAIN PUMP
529730	F-P	WASHER INLET WATER VALVE
424569P	F-P	WASHER SUSPENSION ROD KIT



285785



W10734521



W10913953



W10837240



WP3406107



W10780045



W10780048



205222



38174



203741



205547P



479595



424569P

The Future is Now – and It’s Stunning

Marcone is a technology company – and we’re pretty great at parts distribution, too. In fact, we are the largest distributor of OEM appliance parts. We believe that weaving technology into our operations is the best way to transform the future of the distribution industry. From ordering to inventory to delivery, we put the latest technologies to work so you don’t have to.

Whether you’re fixing a fridge or mending a microwave, you shouldn’t have to worry about how or when your parts will arrive. You do the hard work of installing and repairing equipment. Let us handle the details.



MASTERING OF THE ART OF SERVICE – THAT’S WHAT DRIVES THE MARCONE SERVICERS ASSOCIATION



The Marcone Servicers Association works to continually improve the home service industry by being the first, best and most reliable source of practical information for the progressive servicer.

MSA provides its members with expert hands-on local training, access to resource libraries and a variety of business programs and personal benefits:

MSA Training: The Knowledge You Need –

MSA Training brings you convenient, hands-on and virtual education courses taught by certified experts.

MSA Business: Benefits That Exceed –

We offer you variety of programs and tools to help your business succeed.

MSA Health: Care that Leads* –

For small business owners, employee insurance and benefits can be one of the most expensive parts of running their business.

**Not available in Canada.*

D-I-Y RETAIL PARTS PROGRAM EARN WITHOUT INVENTORY OR CONTRACT

MyParts CENTER



RECEIVE A QUARTERLY
REBATE FOR **15%** OF YOUR
MPC NET REVENUE



EXCLUSIVE
TOLL-FREE NUMBER



ORDERS PLACED WITH
TRAINED AGENTS



MARCONE MANAGES
SHIPPING, BILLING
AND RETURNS

ENROLL TODAY!
marcone.com



COMMERCIAL KITCHEN

BEVERAGES

Multiplex

PART #	VENDOR CODE	DESCRIPTION
020008742	MLP	KIT ASSY, LOWER BLENDER, 6MM GEN3
020008839	MLP	BIN FITMENT ADAPTER VITOP
020008344	MLP	ASSY LOWER BLENDER UGS
020009016	MLP	KIT BIC TU MF NA
1708685	MLP	INSERT, CUP ALIGNMENT, BIC
020008743	MLP	KIT MIXER MTR, 6MM, 120V/50-60 GEN3 SW
VMP00123	MLP	DRIVE BELT, SHAVER VITAMIX 1617
1708687	MLP	GRATE, RINSE ASSY, BIC
000-BIC-01GS-S	MLP	KIT SRV BLENDER POWER CORD BIC MF

ICE

Manitowoc Ice

PART #	VENDOR CODE	DESCRIPTION
000015209	MTW	ICE THICKNESS PROBE W/WASHER
000015573	MTW	NTC IP68 THERMISTOR SERVICE
PPSV040808W	MTW	SHUT OFF VALVE 1/4 OD JOHN GUEST

Scotsman

PART #	VENDOR CODE	DESCRIPTION
12-2986-21	SCT	WATER PUMP
11-0504-01	SCT	PRESSURE SWITCH
11-0617-21	SCT	KIT TEMP CONTROL BIN
A40664-001	SCT	RESERVOIR ASSEMBLY

FOOD PREPARATION

Berkel

PART #	VENDOR CODE	DESCRIPTION
01-404575-00968	BKL	KNIFE, SST

Hobart

PART #	VENDOR CODE	DESCRIPTION
00-913056-00001	HOB	ND, BLADE OLIVER BREAD SLICER
00-949651-00001	HOB	HOSE, P-PUMP, SERVICE, LXE 7.25
00-502399	HOB	#10 THERMO WIRE PC=FT
00-067500-00057	HOB	O RING
00-913149	HOB	KIT, NCC TEMP CONTROL WITH HARNESS
00-919363-002PK	HOB	00-919363, PACK OF 2, END CAP ASSEMBLY
00-893535	HOB	NOZZLE, ASSEMBLY

MERCHANDISING DISPLAYS

Hatco

PART #	VENDOR CODE	DESCRIPTION
02.30.265.00	HAC	LAMP, 40W, 130V, CTD
R02.19.017.00	HAC	KIT, 208V INFINITE SWITCH
02.01.098.00	HAC	REL, CUBE, 208/240AC, DPDT, 35RES
R02.30.170.00	HAC	KIT, LAMP, 200W, 120V, HALOGEN
R02.19.008A.00	HAC	KIT, 15A, DPST TOG SW. 125/250V

FRYERS

Frymaster

PART #	VENDOR CODE	DESCRIPTION
8076084	FRY	RELAY LATCH/VALVE (DPDT)7A 12V
8260981	FRY	KIT, IGNITOR & GASKET NAT
8261392	FRY	O-RING, (8160596) QTY. 5
8263549	FRY	KIT, IGNITER NATURAL GAS
8261177	FRY	KIT, HI-LIMIT 425F/218C
8104688	FRY	BURNER, GL30 UNIVERSAL SERVICE
8072427	FRY	VALVE, 1/2 X 1/2 4.0 WC GAS
8064206	FRY	PROBE ASSEMBLY MINCO
8261712	FRY	KIT, MOTOR 120 50/60HZ
8262706	FRY	ATO/AIF PROBE KIT
8263446	FRY	KIT, FENWAL MOD LOV SERVICE
8160772	FRY	SLEEVE, CONNECT W/RNFRMNT DRN
8263417	FRY	CONTACTOR KIT
8261072	FRY	PRO UNIVERSAL BURNER KIT
8262212	FRY	KIT, RE PROBE REPLACEMENT
8104137	FRY	CASTER, 2.0 LOW-PROFILE RIGID
8262013	FRY	KIT, SUNNE DEAN T" STAT
8262781	FRY	BEZEL, UHCHD FRONT SB
8263191	FRY	FRYER FILTER PUMP 4GPM CCW
8261122	FRY	KIT, NAT GAS VALVE CNVRNS SVC

Amana

PART #	VENDOR CODE	DESCRIPTION
59114157	ACP	SWITCH, INTERLOCK ASSY
M0805101	ACP	FUSE, 20 A
59004010	ACP	MAGNETRON
M0805205	ACP	FUSE-30A
20034003	ACP	FUSE-20A TD
20057401	ACP	DIODE

American Range

PART #	VENDOR CODE	DESCRIPTION
R10117	ARN	IGNITER, CERAMIC 2.052 SPC670-457 15WIRE LEAD 1/4QDUT UNIVERSAL ARR SERIES

Alto-Shaam

PART #	VENDOR CODE	DESCRIPTION
GS-35238	ATS	GASKET, CTC/CTP DOOR, 7-20
HO-28790	ATS	HOSE, 1/2 SILICONE BRAID
HO-37289	ATS	BULK HOSE, 50MM ID VITON
BM-25603	ATS	I, BUMPER, JAMB, SANOPRENE,
5018685R	ATS	PROBE ASSY, TEE STYLE
FU-34772	ATS	FUSE, 15 AMP, CARTRIDGE & AXIAL
LP-33592	ATS	LAMP, FLOOD, 90W, 130V,
DR-22480F	ATS	I, DOOR, GUIDE, #4404,
CV-35758	ATS	COVER, RAHRBACH HANDLE PLASTIC
GS-22952	ATS	GASKET, DOOR, GREY 19.5 X 27.866
5016716R	ATS	DRIP TRAY ASSB, COMBI DOOR,

PRIMARY COOKING

Alto-Shaam

PART #	VENDOR CODE	DESCRIPTION
BA-48316R	ATS	DAUGHTERBOARD
CM-29301	ATS	CLAMP, HOSE, 23MM
MO-35160	ATS	PUMP, WASH SYSTEM/GREASE
5025699	ATS	SERVICE KIT, RECEPTACLE REPL
KN-3473	ATS	KNOB, THERMOSTAT, 1 THRU 10
SC-2073	ATS	SCREW, 10-32X1-1/2 FLAT
TT-36255	ATS	HI-LIMIT THERMOSTAT 365 DEG C
5023200R	ATS	SERVICE, DISPLAY BOARD, ASSY
VA-46327R	ATS	VALVE, HUMIDITY VENT, LOWER

Baxter

PART #	VENDOR CODE	DESCRIPTION
01-1000V7-00054	BXT	40 WATT HALOGEN BULB, 120V G9 BASE

Cleveland

PART #	VENDOR CODE	DESCRIPTION
SE00114	CLD	KIT; NEW POT. & SEAL
KE50569-1	CLD	KNOB; POTENTIOMETER
KE00458-1	CLD	CONTROL BOX; KET, KGL/T
SE00119	CLD	KIT THERMOSTAT REPL (TR)
104026	CLD	GASKET; DOOR; SC 5.1/10
103731	CLD	CAPILLARY; HI LIMIT
107239	CLD	HOUSING; PROBE; PLASTIC;
S103643	CLD	LATCH; DOOR; PADDLE TYPE S
07128	CLD	GASKET; 3 IN FLANGE HTR
SE00028	CLD	KNOB HRDWRE STEAM VALVE
107241	CLD	BOARD; WATER LEVEL CONT
03509	CLD	CONTACTOR; 50 AMP;
KE54941-6	CLD	SAFETY VLV; 50#, 1/2X1/2
FK103881	CLD	208-220V; 8KW; IMMERSION
KE55069-8	CLD	SAFETY THRMOSTAT; KEL/KGL
KE54941-5	CLD	SAFETY VLV; 50#, 1/2X1/2
S40462	CLD	PROBE; ASY W/LOCK; WASHER
08511	CLD	HOSE; WHITE EPDM; 3/4 IN
FK22221	CLD	KIT-VALVE, SOLENOID, 1/2IN
KE50556-1	CLD	PROBE; WATER LVL KEL, KET,

Convotherm

PART #	VENDOR CODE	DESCRIPTION
7030541	CNV	DOOR HYGIENIC PLUG-IN GA
5050285	CNV	DOSING DUMP FOR CLEANING
7056340	CNV	GASKET; DOOR; 10.10; CONV4
7056338	CNV	GASKET; DOOR; 6.10; CONV4
5018035	CNV	CLEANER PUMP CONVOCLEAN
4056354	CNV	FUSE; T4A; 10 PC; 6.3X32MM
5056377	CNV	FLOWMETER; CONV4
5050514	CNV	SOLENOID VALVE DOUBLE 18
5056379	CNV	VALVE; SOLENOID; 230V; DBL
7056339	CNV	GASKET; DOOR; 6.20; CONV4
5056378	CNV	VALVE; SOLENOID; 230V; SING
4056950	CNV	IGNITION + GROUND ELECTR
5056356	CNV	BOARD; CONTROL; SIB
FKC5008011	CNV	KIT; PUMP REPLACEMENT
5066600	CNV	MAXX PRO 10 EZTCH CTRLR
5056314	CNV	LAMP; HALOGEN; G4; 12V; 10W
W-CLEAN2	CNV	CONVO-CLEAN CC102 (2)-2.5GAL

Garland

PART #	VENDOR CODE	DESCRIPTION
CK4523127	GRL	OPEN TOP PILOT ASSY KIT
4522374	GRL	LABEL, PULL PLUGS
4603115	GRL	REFERENCE SWITCH KIT
CK4603129	GRL	SERVICE KIT- ACTUATOR, COMMON
1005800	GRL	DOOR SPRING
4610005	GRL	HI LIMIT KIT
080000037	GRL	KIT, 3 PLATEN, SPLIT, VITON BLUE DOT

Garland

PART #	VENDOR CODE	DESCRIPTION
4518817	GRL	18IN THERMOCOUPLE
4523506	GRL	60IN THERMOCOUPLE SIT 0290092
CK4530036	GRL	KIT-ACTUATOR MICRONAS SENSORS DUAL CONNE
080000036	GRL	KIT, 2 PLATEN, SPLIT VITON 0505100210845-C
1859807	GRL	PLATEN WIRE HARNESS-STD
CK4603990	GRL	SIT OVEN CONTROL 1.0MM MIN RATE SCREW SE
080000035	GRL	KIT, 2 PLATEN, SPLIT VITON 9905CL0056-0505
4604306	GRL	TUBING SILICONE COLD SHRINK 70 MM
CKG03185-2	GRL	INFINITE SWITCH-240 VOLT KIT
2423300	GRL	SWITCH SPST 1801-1146 MARQUARD
4530671	GRL	OPEN BURNER VALVE LESS HOOD
4524082	GRL	KIT, RELAY
4525542	GRL	SEAL, CONDUIT ELBOW

Henny Penny

PART #	VENDOR CODE	DESCRIPTION
175860	HNP	PACK-SERVICE O-RINGS

Lincoln

PART #	VENDOR CODE	DESCRIPTION
369124	LMS	COOLING FAN
369192	LMS	CAPACITOR 7.5 MFD, 370 VAC
369470	LMS	SEAL INSULATION
371109	LMS	CONTROL BOARD PLATFORM3
369398	LMS	VALVE AUTO NT/LP 3"

Merrychef

PART #	VENDOR CODE	DESCRIPTION
P30Z1415	MRF	TOSHIBA MAGNETRON 2M303H
30Z1177	MRF	20 AMP LITTELFUSE FLM020
PSB316	MRF	E2S DOOR SEAL
P30Z5021	MRF	CONTROL PCB UNI SRB
PSB1148	MRF	E2S CAVITY X4 STUD FIX REPLACEMENT C-PLATE STUD
PSR317	MRF	E2S W/GUIDE&P/PLATE KIT
PDB0819	MRF	SINGLE SIDED COOK PLATE USA ONLY
30Z1331	MRF	1.00UF CAPACITOR 2500V
PSR271	MRF	E2S DOOR M/SWITCH KIT
PSB3168	MRF	PTFE WRAPPED IMPINGER V2
PSR109	MRF	DIODE REPLACEMENT KIT
31Z1374	MRF	DOOR HINGE ASSY E2S
30Z1477	MRF	E2 MICROSWITCH SHORT ARM
31Z0186	MRF	SILASTIC (BLACK)
PSR270	MRF	STIRRER ASSY E2S & E4S

Rational

PART #	VENDOR CODE	DESCRIPTION
40.00.453P	RAT	SOLID STATE RELAIS
20.02.551P	RAT	DOOR GASKET
24.02.959P	RAT	DOOR CATCH
40.00.606P	RAT	CORE TEMPERATURE PROBE
40.02.684P	RAT	AIR INLET FILTER CPL.
40.05.424P	RAT	AIR INLET FILTER CPL.
2112.1006S	RAT	STEAM HOSE KIT Ø50X50MM
20.02.553P	RAT	DOOR GASKET
74.00.873P	RAT	EARTH ELECTRODE, HOT AIR
20.02.550P	RAT	DOOR GASKET
16.02.062P	RAT	DIAL F. PULSE GENERATOR

PRIMARY COOKING

Rational

PART #	VENDOR CODE	DESCRIPTION
20.00.399P	RAT	CORE TEMPERATURE PROBE
20.00.399P	RAT	DOOR GASKET
10.02.008P	RAT	RIVET WITH SCREW
74.00.034S	RAT	IGNITIONELECTRODE, HOT AIR
20.02.549P	RAT	DOOR GASKET
70.01.530S	RAT	AUTOMATIC IGNITION CONTROLLER
44.01.241P	RAT	DRAIN HOSE STEAM GENERATOR
1900.1155US	RAT	FILTER CARTRIDGE, R95-CL
50.00.303P	RAT	BUSHING DRIP COLLECTOR

Vulcan

PART #	VENDOR CODE	DESCRIPTION
00-498041-00012	VCN	KNOB, GRIDDLE, THERMOSTAT
00-498025	VCN	VALVE, PILOT SAFETY
00-412788-00020	VCN	THERMOCOUPLE, T46 20
00-944133	VCN	SWITCH, GTS HIGH LIMIT
00-353589-00001	VCN	PROBE, TEMPERATURE

REFRIGERATION

Delfield

PART #	VENDOR CODE	DESCRIPTION
000-CZ0-0253-S	DLF	ASSY,CTL,RFG,DBL HU (BASE)
1702796	DLF	DOOR GASKET FULL S/S DOOR 21.58 X 57.40 DART TO DART 59 X 23.25 OD
1702541	DLF	DRAWER GASKET 24 DRAWER 2 HIGH (21.90 X 13.08) (TRIPLE DART)
2194792	DLF	DANFOSS BLUE DIGITAL DISPLAY
1702473	DLF	DOOR GASKET 24DOOR 22.34 X 25.57 (TRIPLE DART)
2162691	DLF	MOTOR, UPPCO, 115V/50/60HZ, (REPLACES 216-2674) (SEE 2162692 FOR 220V)
3516352	DLF	FILTER, DRYER, (2) INLET
2194335	DLF	SAFETY THERMO
1701185	DLF	DOOR GASKET 27 (24.88 X 23.85)
3234557	DLF	KNOB (2194107 & 2194110) (INF-HAS OFF/LOW/HI ON KNOB)

Hoshizaki

PART #	VENDOR CODE	DESCRIPTION
2A3017-01	HOS	GASKET (A)

REFRIGERATION

Beverage-Air

PART #	VENDOR CODE	DESCRIPTION
00C30-123D-03	BEV	KIT - UNIVERSAL SERVICE CONTROLLER (REF) W/PROBES

Delfield

PART #	VENDOR CODE	DESCRIPTION
2194110KT-S	DLF	INFINITE CONTROL 208V/230-240 WELLS (KNOB = 3234557)
1702623	DLF	DOOR GASKET 24.81 X 27.49 (TRIPLE DART)-CASE QTY 15
2194836	DLF	PROBE DANFOSS NO STRIPES CABINET SENSING RETURN AIR
2194835	DLF	PROBE, DEFROST, DANFOSS 2 BLUE STRIPES
2194809	DLF	PROBE DANFOSS BOX TEMP NO STRIPE NEW BLACK PROBE 118 LONG
3516478	DLF	DRIER, 1.5IN3, DML (2) IN 1/4, OUT 1/4
2194808	DLF	PROBE DEFROST DAN FOSS EVAP COIL TEMP (2 BLUES STRIPES) NEW BLUE PROBE 118 LONG

WALK-INS

Kolpak

PART #	VENDOR CODE	DESCRIPTION
500002492	KOL	HEATER WIRE SERVICE/INSTALL KIT FOR 500002292



National distribution centers in most major metro areas



Orders received by 5 p.m. ship same-day



Same- or next-day delivery across 93% of the U.S., 100% second day



160 local branches

TAILORED SOLUTIONS SYSTEM:

- Local access to OEM parts
- Low-cost, next-day ground shipping on nearly all orders
- Dedicated customer solution team
- User- and mobile-friendly ordering platform
- Easy, 120-day parts returns

YOU'RE GOING TO LIKE DOING BUSINESS WITH US!

Elevate your commercial kitchen experience with Marcone. Our commitment is evident in our customer-centric culture, innovative technology for equipment maintenance and a vast inventory of genuine OEM parts. Choose Marcone for a blend of top-tier OEM parts, advanced integrated technology and tailored customer solutions.



- First-time call completion
- Affordable next-day delivery for 94% of the U.S.
- Success-driven solutions to boost your profitability
- Tech-based operations for order accuracy and speed



- Easy returns with no stocking fee
- America's largest appliance parts inventory
- Same day, flat-rate shipping
- Yesterday's prices, today's service, tomorrow's technology



- Distribution network strategically located across the U.S.
- OEM parts from the industry's biggest manufacturers
- New inventory arriving daily
- Expert advice from experienced professionals

ALTO-SHAAM.

AMANA
JUST RIGHT.

BAXTER

Berkel



BEVERAGE-AIR

Champion
The Dishwashing Machine Specialists

CLEVELAND
A Welbilt Brand

CONVOTHERM
A Welbilt Brand

DELFIELD
A Welbilt Brand

FRYMASTER
A Welbilt Brand

GARLAND
A Welbilt Brand

Hatco

HOBART

HOSHIZAKI

Ice-O-Matic
Ice. Pure and Simple

KASON

KOLPAK
A Welbilt Brand

Manitowoc

MERRYCHEF
A Welbilt Brand

RATIONAL

Scotsman
Ice Systems

Traulsen

VOLLRATH

VULCAN

WOLF

MANUFACTURERS

Primary Cooking

Alto-Shaam
Amana
American Range
Axis
Baxter
Cleveland
Convotherm
Duke
Garland
Henny Penny
Lincoln
MenuMaster
Merrychef
Rational
Sierra
SunFire
US Range

Vulcan
Wolf
Wood Stone
XpressChef
Warewashing
Champion
Hobart Warewashing
Jet-Tech
Moyer Diebel
Stero
Walk-in
Kolpak
Beverage
Krowne
Multiplex
Servend
Spaceman
UNIC

Food Preparation

Berkel
Edlund
Hobart
Primo
Winco
Fryers
Dean
Frymaster
Hardware
Kason
Heat and Hold
Cres Cor
Duke
Merco

Ice

Hoshizaki
Ice-O-Matic
Manitowoc Ice
Osion
Scotsman

Merchandising Display

Hatco
Vollrath

Refrigeration

Beverage-Air
Delfield
Hoshizaki
Hydra Kool
Ikon
Kool-It
Traulsen
Victory



HVAC

AIR CLEANERS



4900-20

Nu-Calgon

PART #	VENDOR CODE	DESCRIPTION
4900-20	NUC	NU-CALGON 4900-20 IWAVE-R RESIDENTIAL IAQ ION GENERATOR (190558)

Research Products Corporation

PART #	VENDOR CODE	DESCRIPTION
2210	RSP	APRILAIRE 2210 20X25 MERV 13 MEDIA AIR CLEANER (56311)
2410	RSP	MEDIA AIR CLEANER 16X25
5000	RSP	H&C 657-10X6W BASEBOARD RETURN (43641)(14116)
6508KV	RSP	APRILAIRE 6508KV KITCHEN VENTILATION KIT 8 ROUND (174249)
6510KV	RSP	KITCHEN VENTILATION KIT 10 INCH

Resideo

PART #	VENDOR CODE	DESCRIPTION
F100F1625/U	RSD	MEDIA AIR CLEANER 1400CFM 16 X 25
F300E1035/U	RSD	ELECTRONIC AIR CLEANER 20X25

RGF

PART #	VENDOR CODE	DESCRIPTION
PHIC-RH	RGF	RGF PHI CELL- REME HALO REPLACMENT 9 REPLACEMENT CELL 1 YEAR WARRANTY (180470)
REME ZERO	RGF	REME HALO ZERO 24V
REME-LED	RGF	RGF REME-LED HALO-LED WHOLE HOME AIR IN-DUCT PURIFICATION (232054)



PHIC-RH



REME-LED

AIR VENTILATION



8126X

Research Products Corporation

PART #	VENDOR CODE	DESCRIPTION
8126X	RSP	AUTO VENTILATION CONTROL W/ DAMPER

Resideo

PART #	VENDOR CODE	DESCRIPTION
40003916-026/U	RSD	V8043E POWERHEAD ASSBLY 2 WAY 18 LEAD



40003916-026/U

FITTINGS

Watts

PART #	VENDOR CODE	DESCRIPTION
50167	PPG	1/2 FEMALE X 1/2 MALE 18 L DORMONT STAINLESS STEEL GAS CONNECTOR



50167

Wolverine Brass

PART #	VENDOR CODE	DESCRIPTION
83232	PPG	1/2 X 1-1/2 PROSERIES BLACK NIPPLE



83232

BRAZING



57263



75108



95120



95150



95177



99088



95455

Lucas Milhaupt

PART #	VENDOR CODE	DESCRIPTION
57263	LCM	SOLDER MEETS WATER SAFE ACT 1/8X1LB SPL
75108	LCM	FLUX PASTE 4 OZ SOLDER LUCAS 75108 SILVABRITE PASTE FLUX HARRIS SCPF4 STAY CLEAN PASTE (217718)
95120	LCM	BRAZE 6% STICK 28 PIECE TUBE LUCAS 95120 HANDY-FLO 6 HARRIS D620F1 DYNAFLOW (222286)
95150	LCM	SILFOS 15 .050 X 1/8 X 28 STICK TUBE
95177	LCM	BRAZE 15% STICK 1 PIECE STICK LUCAS SIL-FOS 15 HARRIS STAY-SILV 15 (SIL-FOS 15) (72121)
99088	LCM	SOLDER ALUM TO ALUM OR COPPER 900DEG 4PK

MARS

PART #	VENDOR CODE	DESCRIPTION
95455	MAR	BLOC-IT 10 OZ

CAPACITORS



TFX17.5



TFX45



TFX50



TFX60



TFX65



TFX85

DiversiTech

PART #	VENDOR CODE	DESCRIPTION
TFX17.5	WAG	TITANFX MULTICAP 17.5 TTL MFD
TFX45	WAG	TITANFX MULTICAP 45 TOTAL MFD
TFX50	WAG	TITANFX MULTICAP 50 TOTAL MFD
TFX60	WAG	TITANFX MULTICAP 60 TOTAL MFD
TFX65	WAG	TITANFX MULTICAP 65 TOTAL MFD
TFX85	WAG	TITANFX MULTICAP 85 TOTAL MFD

CHEMICALS



1714



11509



11509

DiversiTech

PART #	VENDOR CODE	DESCRIPTION
1714	WAG	FOAM SEAL 12 OZ

JB Industries

PART #	VENDOR CODE	DESCRIPTION
11509	JBX	COOL GEL HEAT BARRIER QRT

MARS

PART #	VENDOR CODE	DESCRIPTION
93803	MAR	LEAK LOCK 1 1/3 OZ. 24/PCK
93804	MAR	LEAK LOCK 4 OZ.



93803

We Make It Easy

CHEMICALS

CONDENSATE PUMPS



61105



4050-02



4050-11



4050-15



4082-03



4127-75



4151-18



4166-08



4168-08



4178-08



4182-24



4186-24



4190-02



4191-08



4291-08



4291-18



4291-90



4300-10



4300-11



4300-38

Nu-Calgon

PART #	VENDOR CODE	DESCRIPTION
61105	NUC	NU-CALGON 61105 PENETRATE AEROSOL LUBRICANT 12oz (CHM01080) (161007)
61113	NUC	NU-CALGON 61113 SPRAY NINE QT (CHM01083)(26832)(26810) (244098)
4050-02	NUC	A/C EASYSEAL 2 CANS WITH HOSE
4050-06	NUC	A/C EASY SEAL
4050-08	NUC	NU-CALGON EASY SEAL DIRECT INJECT
4050-11	NUC	EASYSEAL DIRECT INJECT R
4050-12	NUC	NU-CALGON 4050-12 EASYSEAL ULTIMATE LS/UV 2.0- 7.5 TON SYSTEM AC SEALANT & UV DYE SOLD AND PRICED P (193066)
4050-15	NUC	NU-CALGON 4050-15 UV LEAK DETECTION KIT INCLUDES LED UV LIGHT AND SAFETY RATED FLUORESCENCE ENHANCIN (193067)
4057-55	NUC	NU-CALGON 4057-55 A/C RE-NEW 4 OZ (CHM00834) (66279)
4082-03	NUC	ELECTRICAL CONTACT CLNR 16-OZ
4120-90	NUC	ALKA-BRITE CONCENTRATE COIL CLEANER
4127-75	NUC	BLACKHAWK AEROSOL
4133-08	NUC	ACID-BASED COIL CLEANER (LOW FOAM)
4151-18	NUC	COMPLETE CARE MINI SPLIT KIT
4155-01	NUC	NU-CALGON 4155-01 CONNECT INJECTOR TOOL (TOL05137) (199393)
4166-08	NUC	EVAP FRESH COIL CLENER DISINFECTANT
4166-75	NUC	EVAP FRESH 18-OZ CAN
4168-08	NUC	EVAP POWER-C 1 GALLON NO RINSE
4171-75	NUC	EVAP FOAM NO-RINSE 16OZ AEROSOL
4178-08	NUC	FOAM BRITE HI FOAM 1 GALLON
4182-24	NUC	CAL-BLUE 1-QT LEAK DETECTOR
4185-75	NUC	GREAT WIPES HAND TOWELS (75 COUNT)
4186-24	NUC	CLEAN GREEN QUART
4190-02	NUC	MAXITROL 325-5-3/4 REGULATOR 3/4NPT 10PSI MAX INLET 4-12WC OUT 325MBH MAX LOAD (14913)
4190-08	NUC	CONDENSER CLEANER (GREEN)
4191-08	NUC	EVAP GREEN EVAPORATOR COIL CLEANER
4290-75	NUC	NU-BLAST COIL CLEANER
4291-08	NUC	NU-BRITE CONDENSER COIL CLN FOAM
4291-18	NUC	NU-BRITE AEROSOL 18 OZ CAN
4291-90	NUC	NU-BRITE CONCENTRATE COIL CLEANER
4300-08	NUC	RX11 FLUSH STARTER KIT
4300-10	NUC	NU-CALGON 4300-10 RX11 FLUSH 2+1 AC/R (2-2LB) (54893)
4300-11	NUC	RX11 FLUSH 2-LB CAN
4300-30	NUC	RX11 FLUSH LIQUID 19.5 FL OZ CAN
4300-38	NUC	RX11 LIQUID FLUSH STARTER KIT
4300-50	NUC	EMPOV-25-SG-NAT 25M BTU DIR VENT FURNACE (14792)
4300-51	NUC	EL-26L158 3/8DUPLX GREEN FIELD
4300-89	NUC	RX11 FLUSH INJECTION TOOL
4301-02	NUC	RX-ACID SCAVENGER LIQUID
4301-06	NUC	NU-CALGON 4301-06 RxCID SCAVENGER CONNECT INJECT (CHM01489) (199394)
4371-38	NUC	THERMO-TRAP PUTTY
4371-88	NUC	TRI-POWER COIL CLEANER 1 GAL
4371-90	NUC	TRI-POWER CONCENTRATE COIL CLEANER
4372-24	NUC	TRICLEAN 2X COIL CLEANER QT 6X1 CS



CP-22LP



PROCP-22ST



554425



VCMX-20ULST



NT1-P



83909

DiversiTech

PART #	VENDOR CODE	DESCRIPTION
CP-22LP	WAG	CONDENSATE PUMP - 22' LI
CP-22T	WAG	OLD JCI CP-22T
IQP-120T	WAG	CONDEN.PCLEARVUE™ W/TUBE120V
PROCP-22ST	WAG	CON PUMP120V22FT LIFTW/TUBE

Franklin Electric

PART #	VENDOR CODE	DESCRIPTION
554425	FRK	VCMA CONDENSATE PUMP 25GPH 20' LIFT
555111	FRK	PONY PUMP UTILITY KIT MODEL 360K
554201101	FRK	LIT VCCA-20ULS LOW PROFILE CONDENSATE (554201101) PUMP 115V (257284)
VCMX-20ULST	FRK	NXTGEN CONDENSATE PUMP 20' LIFT

Meek Brothers

PART #	VENDOR CODE	DESCRIPTION
NC-1	MEE	CONDENSATE NEUTRALIZATION KIT
NM-1	MEE	NEUTRALIZNG MEDIA (LIPHTER) FOR NC-1
NT1-P	MEE	CONDENSATE NEUTRALIZATION TANK WITH PUMP

RectorSeal

PART #	VENDOR CODE	DESCRIPTION
83909	REC	ASPEN 83909 MINI ORANGE UNIVOLT PUMP KIT 100-250V ASP-MO-UNI (126665)
83939	REC	ASPEN 83939 MINI WHITE UNIVOLT PUMP KIT 100-250V ASP-MW-UNI (125772)

CONTROL BOARDS



S8610U3009/U

Resideo

PART #	VENDOR CODE	DESCRIPTION
S8610U3009/U	RSD	INTERMITTENT PILOT MODULE
S9200U1000/U	RSD	IFC UNIVERSAL INTERGRATED FURNACE CONT

DUCTLESS ACCESSORIES



WBB-300

RectorSeal

PART #	VENDOR CODE	DESCRIPTION
WBB-300	REC	WALL CONDENSER BRACKET 300LBS

DRAIN PANS



96208

RectorSeal

PART #	VENDOR CODE	DESCRIPTION
96208	REC	RECTORSEAL 96208 30 X 62 GOLIATH DEXELAR SECONDARY DRAIN PAN (219237)

DUCT SEALERS



AFG-1404-SILVER-2



FG550

Hardcast

PART #	VENDOR CODE	DESCRIPTION
AFG-1404-SILVER-2	HRD	UL181 DUCT SEALANT TAPE 2 INCH X 100'
AFG-1404-SILVER-3	HRD	UL181 DUCT SEALANT TAPE 3 INCH X 100'
CCWI 181	HRD	GRAY DUCT SEALER WITH FIBER
FG550	HRD	FLEX GRIP 550 GRAY DUCT SEALER NO FIBER

CO2 SMOKE



KN-COB-DP2



KN-COPP-B-LPM

Kidde

PART #	VENDOR CODE	DESCRIPTION
KN-COB-DP2	KID	CO DETECTOR AC/DC NO DISPLAY
KN-COB-LP2	KID	CO DETECTOR 2AAA BAT SELL BY EACH
KN-COPP-3	KID	CO DETECTOR AC/DC WITH DISPLAY
KN-COPP-B-LPM	KID	CO DETECTOR DIGITAL DISPLAY SOLD EACH

ELECTRIC



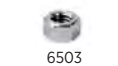
DiversiTech

PART #	VENDOR CODE	DESCRIPTION
620-201	WAG	OUTLET BOX 1-7/8 DEEP 1/2 KOS
6-202-2	WAG	DIVERSIGUM SEALING COMPO
620-254	WAG	UTILITY COVER FLAT BLANK
620-274W	WAG	OUTLETW/SWCHWHITE120V10/BX
620-608	WAG	FUSE SWITCH/FUSE COMBO(ESSU)
623-002	WAG	WIRE CONNECTS-BLUE SIZE
623-003	WAG	WIRE CONNECTS-ORANGE SI
623-004	WAG	WIRE CONN. YEL74B PK OF 100
623-005	WAG	WIRE CONNECTS-RED SIZE
625-1301W	WAG	TOGGLE SWITCH 15A
625-2132W	WAG	COVER WALL DUPLX RECP RED
625-2134W	WAG	COVERWALLSINGLE TOGGLEWHITE
750-NMLT4550	WAG	LIQUIDTIGHT CONNECTOR
750-NMLT4575	WAG	LIQUIDTIGHT CONNECTOR
750-NMLT50	WAG	CONNECTOR NON METALLIC-2
750-NMLT75	WAG	CONNECTOR NON METALLIC-1
750-NMLT9050	WAG	CONNECTOR NON METALLIC (
750-NMLT9075	WAG	CONNECTOR NON METALLIC-1
750-RC841	WAG	CONNECTOR ROMEX 3/8IN.
750-SLTC50	WAG	CONN.NM LIQ.TITE1/2 SCREW ON
750-SLTC75	WAG	CONN.NM LIQ.TITE3/4 SCREW ON
750-SLTC9075	WAG	CONN.LIQUID TITESO ELNM3/4
PI306	WAG	STRAP FIT EMT 1/2PK OF 20
PI307	WAG	EMT STRAP FITS 3/4PK OF 12
WS-1	WAG	WET SWITCH

MARS

PART #	VENDOR CODE	DESCRIPTION
80308	MAR	MARS DISCONNECT W/GFCI RECEPT
82328	MAR	12A S FUSE S0012
85402	MAR	3/8 90 DEG ANGLE CONCTR(BULK)
90290	MAR	FAN RELAY
90291	MAR	SPST 110/120 RELAY
90293	MAR	FAN RELAY
90341	MAR	POWER-POWER 120V

FASTENERS



DiversiTech

PART #	VENDOR CODE	DESCRIPTION
6503	WAG	FIN. HEXNUT 3/8IN-16 ZN PLTD.

FILTERS



Research Products Corporation

PART #	VENDOR CODE	DESCRIPTION
201	RSP	APRILAIRE 201 REPLACEMENT MEDIA 20X25 MERV 10 (45503)
213	RSP	APRILAIRE 213 REPLACEMENT MEDIA 20X25 MERV 13 (54702)

FILTERS



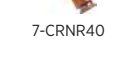
Research Products Corporation

PART #	VENDOR CODE	DESCRIPTION
413	RSP	APRILAIRE 413 REPLACEMENT MEDIA 16X25 MERV 13 (54703)
501	RSP	APRILAIRE 501 REPLACEMENT MEDIA FOR 5000 EAC (45505)
1210	RSP	APRILAIRE 1210 20X25 MERV 11 MEDIA AIR CLEANER (79086)
1410	RSP	APRILAIRE 1410 16X25 MERV 11 MEDIA AIR CLEANER (79087)
210-RP	RSP	APRILAIRE MEDIA 20X25 MERV 11
413CBN	RSP	APRILAIRE 413CBN REPLACEMENT MEDIA 16X25 MERV 13 W/ ODOR REDUCTION (201726)
610-RP	RSP	16X25 UNIVERSAL FILTER MERV 10
810-RP	RSP	20X25 UNIVERSAL FILTER MERV 10

Resideo

PART #	VENDOR CODE	DESCRIPTION
203368/U	RSD	PER-FILTERS 16X25 1 PACK OF 2 EACH
203369/U	RSD	PRE FILTERS FOR F100B1032 1 PACK OF 2 EA
203372/U	RSD	F50A EAC PREFILTER 20X25 1 PACK OF 2 EA
FC100A1029/U	RSD	CHARGED MEDIA FILTER 16X25X4-3/8 MERV 11
FC100A1037/U	RSD	CHARGED MEDIA FILTER 20X25 MERV 11
FC200E1029/U	RSD	CHARGED MEDIA FILTER 16X25X4-3/8 MERV 13
FC200E1037/U	RSD	CHARGED MEDIA FILTER 20X25 MERV 13

FUSES



DiversiTech

PART #	VENDOR CODE	DESCRIPTION
7-CRNR15	WAG	FUSE TIME DELAY 15AMP
7-CRNR20	WAG	FUSE TIME DELAY 20AMP
7-CRNR25	WAG	FUSE TIME DELAY 25AMP
7-CRNR30	WAG	FUSE TIME DELAY 30AMP
7-CRNR35	WAG	FUSE TIME DELAY 35AMP
7-CRNR40	WAG	40AMP TIME DELAY FUSE
7-CRNR50	WAG	50AMP TIME DELAY FUSE
7-CRNR60	WAG	60AMP TIME DELAY FUSE

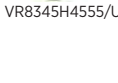
GAS



General Air

PART #	VENDOR CODE	DESCRIPTION
ACB	GNA	ACETYLENE REFILL - LARGE
NI60A	GNA	NITROGEN COMPRESSED REFILL

GAS VALVES



Resideo

PART #	VENDOR CODE	DESCRIPTION
L4006H1004/U	RSD	130-270F TEMP RANGE STOP SET AT 250F WI
SV9501M2528/U	RSD	SMART VALVE INTRMIT HS PILOT 1/2 X 1/2
VR8215S1503/U	RSD	GAS VALVE SINGL STG STD OPEN DIR IGN
VR8245M2530/U	RSD	GAS VALVE DUAL INTER NAT 1/2X1/2 24V
VR8345H4555/U	RSD	GAS VALVE DUAL DI NAT 3/4X3/4 24V



AIR DISTRIBUTION



Shoemaker Manufacturing

PART #	VENDOR CODE	DESCRIPTION
1050-10X10	SHO	RETURN AIR GRILLE
1050-10X4	SHO	RETURN AIR GRILLE
1050-10X6	SHO	RETURN AIR GRILLE
1050-12X12	SHO	RETURN AIR GRILLE
1050-12X6	SHO	RETURN AIR GRILLE
1050-12X8	SHO	RETURN AIR GRILLE
1050-14X10	SHO	RETURN AIR GRILLE
1050-14X14	SHO	RETURN AIR GRILLE
1050-14X6	SHO	RETURN AIR GRILLE
1050-14X8	SHO	RETURN AIR GRILLE
1050-16X16	SHO	RETURN AIR GRILLE
1050-16X8	SHO	RETURN AIR GRILLE
1050-20X20	SHO	RETURN AIR GRILLE
1050-24X6	SHO	RETURN AIR GRILLE
1050-24X8	SHO	RETURN AIR GRILLE
1050-30X10	SHO	RETURN AIR GRILLE
1050-30X6	SHO	RETURN AIR GRILLE
1050-30X8	SHO	RETURN AIR GRILLE
1050-8X8	SHO	RETURN AIR GRILLE
1600-6X14	SHO	HD FLOOR RETURN AIR GRILLE
325-4X10B	SHO	4X10 FLOOR REGISTER BROWN
325-4X10W	SHO	4X10 FLOOR REGISTER WHITE
325-4X12B	SHO	4X12 FLOOR REGISTER BROWN
350-21/4X10B	SHO	HEAVY DUTY BROWN FLOOR REGISTER
350-4X10	SHO	HEAVY DUTY BROWN FLOOR REGISTER
350-6X10	SHO	HEAVY DUTY BROWN FLOOR REGISTER
350-6X12	SHO	HEAVY DUTY BROWN FLOOR REGISTER
830-12	SHO	PERF T-BAR RETURN AIR
850-10X4	SHO	2-WAY SIDEWALL REGISTER
850-12X4	SHO	2-WAY SIDEWALL REGISTER
850-12X6	SHO	2-WAY SIDEWALL REGISTER
850-12X8	SHO	2-WAY SIDEWALL REGISTER
850-14X6	SHO	2-WAY SIDEWALL REGISTER
90-6	SHO	STEP DOWN ROUND DIFFUSER
90-8	SHO	STEP DOWN ROUND DIFFUSER
91-6	SHO	BOW TIE DAMPER
951-10X4	SHO	STEEL ADJUSTABLE DIFFUSER W/DAMPER
951-10X6	SHO	STEEL ADJUSTABLE DIFFUSER W/DAMPER
FG1-12X12	SHO	12X12 FILTER GRILL 1
FG1-14X14	SHO	14X14 FILTER GRILL 1
FG1-20X20	SHO	20X20 FILTER GRILL 1
FTD-12	SHO	FIXED HIGH VELOCITY T-BAR DIFFUSER
FTD-6	SHO	FIXED HIGH VELOCITY T-BAR DIFFUSER
FTD-8	SHO	FIXED HIGH VELOCITY T-BAR DIFFUSER
PT-2X2	SHO	PERFORATED T-BAR SCREEN
TS-2X10	SHO	TOE SPACE GRILLE
TSW-2X10	SHO	WHITE TOE SPACE GRILLE

HOSE CLAMPS



MARS

PART #	VENDOR CODE	DESCRIPTION
79312	MAR	SIZE 10 1/2 - 1 1/8 CL
79313	MAR	SIZE 12 1/2 - 1 1/4 CL
79315	MAR	SIZE 20 3/4 - 1 3/4 CLA
79318	MAR	SIZE 28 1 5/16 - 2 1/4
79319	MAR	SZ 36 7/8 - 2 3/4 CLAM
79330	MAR	SIZE 4 7/32 - 5/8 MICRO
79331	MAR	SIZE 6 5/16 - 7/8 MICRO

HUMIDIFIERS



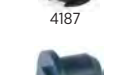
Resideo

PART #	VENDOR CODE	DESCRIPTION
HM750A1000/U	RSD	ADVANCED ELECTRODE HUMIDIFIER
HM750ACYL/U	RSD	HM750 RPLACEMENT CYLINDER

Research Products Corporation

PART #	VENDOR CODE	DESCRIPTION
800	RSP	APRILAIRE 800 STEAM HUMIDIFIER W/ AUTOMATIC DIGITAL CONTROL (68683)
400A	RSP	AUTOMATIC BYPASS HUMIDIFIER DRAIN FREE
400M	RSP	AUTOMATIC BYPASS HUMIDIFIER MANUAL CONT
500A	RSP	BYPASS HUMIDIFIER AUTO DIGITAL CONTROLS
500M	RSP	APRILAIRE 500M (BYPASS) HUMIDIFIER W/ MANUAL CONTROL (52736)
600A	RSP	BYPASS HUMIDIFIER AUTO DIGITAL CONTROLS
600M	RSP	APRILAIRE 600M (BYPASS) HUMIDIFIER W/ MANUAL CONTROL (52737)
700A	RSP	POWER HUMIDIFIER AUTO DIGITAL CONTROLS
700M	RSP	APRILAIRE 700M HUMIDIFIER W/ MANUAL CONTROL FAN POWERED (52738)

HUMIDIFIER PARTS



DiversiTech

PART #	VENDOR CODE	DESCRIPTION
7-38	WAG	CLEAR VINYL TUBE 3/8ID 100FT

Research Products Corporation








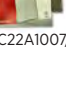


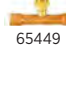

PART #	VENDOR CODE	DESCRIPTION
50	RSP	CURRENT SENSING RELAY 24-VOLT
51	RSP	APRILAIRE 51 CURRENT SENSING RELAY 110V (YELLOW) (45507)
401	RSP	APRILAIRE 401 REPLACEMENT MEDIA 16X25 MERV 10 (45504)
4001	RSP	APRILAIRE 4001 SADDLE VALVE (52730)
4004	RSP	SSF-16X8-SW45 16X8 SW 45 (314) 1141168 (14141)
4010	RSP	APRILAIRE 4010 TRANSFORMER 10VA SPUD MOUNT (45578)
4187	RSP	DRAIN SPUD
4223	RSP	IBF-COUP-34 3/4 BLACK COUPLING (14139)
4231	RSP	APRILAIRE 4231 ORIFICE YELLOW (600) SOLD EACH !!! 12 IN A PKG (45577)
4232	RSP	APRILAIRE 4232 ORIFICE BLUE (700) SOLD EACH !!! 12 IN A PKG (45582)
4235	RSP	APRILAIRE 4235 PLASTIC TUBE & NOZZLE (700 SERIES) LENGTH 24 (45847)
4236	RSP	APRILAIRE 4236 SCALE INSERT FOR #35 PAD (45583)
4237	RSP	APRILAIRE 4237 MOTOR (700 SERIES) (45584)
4238	RSP	APRILAIRE 4238 CIRCUIT BOARD (700) (45585)
4246	RSP	APRILAIRE 4246 WATER DISTRIBUTION TRAY FOR 700 & 760 (45904)

We're Up to the Challenge


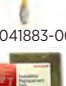
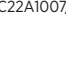

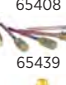
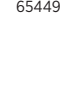
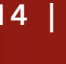
Our depth of knowledge and breadth of inventory separates us from the pack.

HUMIDIFIER PARTS

Research Products Corporation




PART #	VENDOR CODE	DESCRIPTION
 4330	RSP	DUNKIRK 41154052D CAST IRON INTERMEDIATE (MIDDLE) SECTIONS (165 LBS.) (14137)
 4331	RSP	APRILAIRE 4331 WATER DISTRIBUTION TRAY FOR #35 (600) (45572)
 4335	RSP	FEEDER TUBE FOR 600
 4655	RSP	APRILAIRE 4655 MANUAL HUMIDIFIER CONTROL (53639)
 4670	RSP	APRILAIRE 4670 MOTOR 700M & 700A (57707)
 4740	RSP	APRILAIRE 4740 RELAY 700M & 700A (57667)
 4973	RSP	STEAM HOSE (6') WITH CLAMPS
 4976	RSP	TRANSFORMER FOR 800
 4977	RSP	POWER RELAY FOR 800
 4978	RSP	APRILAIRE 4978 ELECTRODE WIRE ASSEMBLY (137088)
 4981	RSP	APRILAIRE 4981 INTERNAL CONTROL CIRCUIT BOARD FOR 800 BEFORE NOVEMBER 2014 (71181)
 4982	RSP	CURRENT SENSING CIRCUIT BOARD
 4983	RSP	APRILAIRE 4983 VALVE (88615)
 5306	RSP	APRILAIRE 5306 TRANSFORMER FOR 800 MULTI-TAP (89516)
 5529	RSP	UNIVERSAL TRANSFORMER MODEL 800 801
5530	RSP	APRILAIRE 5530 CIRCUIT BOARD FOR 800 STEAM AFTER NOVEMBER 2014 (171943)
5832	RSP	SOLENOID VALVE 24-V 700A&M 2020
8051	RSP	APRILAIRE 8051 FLUSH MOUNT SENSOR (50189)
10-RP	RSP	WATER PANEL-MODEL 500A500M550558
12-RP	RSP	WATER PANEL-MODEL 112136224440445
35-RP	RSP	WATER PANEL-MODEL 350360600A/M700A/M
4040-RP	RSP	SOLENOID VALVE 24-VOLT
410-RP	RSP	APRILAIRE MEDIA FILTER 16X25 MERV 11
45-RP	RSP	WATER PANEL-MODEL 400
5531-RP	RSP	INLET FILL VALVE AND WATER FEED SYSTEM
60-RP	RSP	DIGITAL EVAP HUMIDIFIER CONTROL
62-RP	RSP	DIGITAL STEAM HUMIDIFIER CONTROL
80-RP	RSP	STEAM CANISTER AND O-RING
80-RPLC	RSP	STEAM CANISTER FOR LOW CONDUCTIVITY

Resideo

PART #	VENDOR CODE	DESCRIPTION
 32001639-002/U	RSD	SOLENOID VALVE ASSEMBLY
 32001876-001/U	RSD	SOLENOID VALVE ASSEMBLY
 50027910-001/U	RSD	DIFFERENTIAL PRESSURE SWITCH
 50041883-001/U	RSD	SOLENOID VALVE DC
 50041883-002/U	RSD	SOLENOID VALVE AC
 50057547-001/U	RSD	CIRCUIT BOARD FOR HE300 TRUEEASE FAN HUM
 50057547-003/U	RSD	CIRCUIT BOARD FOR HE250 TRUEEASE FAN HUM
HC22A1007/U	RSD	SMALL STANDARD REPLACEMENT PAD
HC22E1003/U	RSD	HUMIDIFIER PAD W/AGION ANTIMICROBIAL
HC26A1008/U	RSD	WATER PANEL - MODEL HE260265360365
HC26E1004/U	RSD	WATER PANEL ANTIMICROBIAL MOD HE265-365


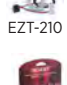










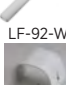


HVAC ACCESSORIES

MARS

PART #	VENDOR CODE	DESCRIPTION
 65408	MAR	BRASS CAP FLAT TOP (6PK)
 65409	MAR	BRASS CAP W/WRENCH (6PK)
 65412	MAR	VALVE CORE TEFLON 6PK
65439	MAR	1/4 EXTENDED TUBE (6PK)
65441	MAR	3/8 EXTENDED TUBE (6 PK)
65449	MAR	3/8 TEE (2 PK)

HVAC ACCESSORIES

RectorSeal



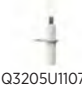
PART #	VENDOR CODE	DESCRIPTION
 AA2-FS	REC	SECONDARY DRAIN PAN SAFE-T-SWITCH
 DH-16S	REC	DRAIN HOSE 5/8 IN X 20 FT
 EZT-113	REC	3/4 IN CROSS TRAP KIT
 EZT-113B	REC	3/4 IN CROSS TRAP KIT WITH BRUSH
 EZT-210	REC	EZT210 3/4 TRAP/SWITCH 1DEEP
 EZT-406	REC	3/4 IN EZT TEE CLEAN OUT BRUSH
 NP-R410	REC	R410A REFRIGERANT CAP SOLD BY EACH
 NP-R410 10PK	REC	PINK R410 CAP 1/4 THREAD 10 PACK
 NP-R410 2PK	REC	R410A REFRIGERANT CAP 2 PACK
 NP-R410 SDT	REC	NOVENT SCREWDRIVER KEY R410A
 NP-UNI	REC	UNIVERSAL REFRIGERANT CAP SOLD BY EACH
 NV-MULTIKEY	REC	NOVENT MULTI KEY FITS ALL CAPS
 SS3	REC	NOVENT MULTI KEY FITS ALL CAPS
 SC1	REC	CONDENSATE DRAIN CLEANOUT
 SS3	REC	COND OVERFLOW SWITCH

IGNITERS

MARS

PART #	VENDOR CODE	DESCRIPTION
 67914	MAR	FLAT HSI IGNITER
 67920	MAR	FLAT HSI IGNITER

Resideo

PART #	VENDOR CODE	DESCRIPTION
 Q3200U1004/U	RSD	GLOWFLY UNIVERSAL IGNITER SOLD EACH
 Q3400A1024/U	RSD	HOT SURFACE IGN FOR SMART VALV
 YERM5220R8321/U	RSD	REDLINK EQUIPMENT REMOTE MODULE INC 8000

INFRARED

Resideo

PART #	VENDOR CODE	DESCRIPTION
 Q3205U1107/U	RSD	GLOWFLY PRO UNIVERSAL IGNITER SOLD EACH

LINESET COVERS

RectorSeal

PART #	VENDOR CODE	DESCRIPTION
 84037	REC	3 1/2 IN FORTRESS WALL FLANGE WHITE
 LCFI-122-W	REC	4 1/2 IN FORTRESS INSIDE VERT 45 ELL
 LCFI-92-W	REC	3 1/2 FORTRESS 45 INSIDE VENT ELL WHITE
 LCFO-122-W	REC	4 1/2 IN FORTRESS OUTSIDE VERT 45 ELL
 LCFO-92-W	REC	3 1/2 FORTRESS 45 OUTSIDE VENT ELL WHITE
 LCI-122-W	REC	4 1/2 FORTRESS INSIDE VERT 90 ELL WHITE
LCI-92-W	REC	3 1/2 FORTRESS 90 INSIDE VERT ELL WHITE
LCO-122-W	REC	4 1/2 IN FORTRESS OUTSIDE VERT 90 ELL
LCO-92-W	REC	3 1/2 IN FORTRESS OUTSIDE VERT 90 ELL
LD-122-W	REC	4 1/2 IN X 8 FT FORTRESS LINESET CHAN
LD-92-W	REC	3 1/2 IN X 8 FT FORTRESS LINESET CHAN
LDK-122-W	REC	4 1/2 IN FORTRESS WALL DUCT KIT
LDK-92-W	REC	3 1/2 IN FORTRESS WALL DUCT KIT 12' DUCT
LDR-122-92-W	REC	4 1/2 X 3 1/2 FORTRESS REDUCER WHITE
LEN-122-W	REC	4 1/2 IN FORTRESS END FITTING WHITE
LEN-92-W	REC	3 1/2 IN FORTRESS END FITTING WHITE
LF-122-W	REC	4 1/2 FORTRESS FLEX ELL WHITE
LF-92-W	REC	3 1/2 FLEXIBLE ELL 92 WHITE
LEJ-122-W	REC	4 1/2 FORTRESS FLEX ELL ADAPTOR WHITE
LEJ-92-W	REC	3 1/2 FORTRESS FLEX ELL ADAPTOR WHITE
LJ-122-W	REC	4 1/2 IN FORTRESS COUPLER WHITE

LINESSET COVERS



LK-122-W



LKF-122-W



LKS-92-W



LP-92-W



LWF-122-W

RectorSeal

PART #	VENDOR CODE	DESCRIPTION
LJ-92-W	REC	3 1/2 IN FORTRESS COUPLER WHITE
LK-122-W	REC	4 1/2 IN FORTRESS FLAT 90 ELL WHITE
LK-92-W	REC	3 1/2 FORTRESS 90 FLAT ELBOW WHITE
LKF-122-W	REC	4 1/2 IN FORTRESS 45 DEG ELL WHITE
LKF-92-W	REC	3 1/2 IN FORTRESS 45DEG ELL WHITE
LKS-122-W	REC	4 1/2 IN FORTRESS 90 SWEEP ELL WHITE
LKS-92-W	REC	3 1/2 IN FORTRESS 90 SWEEP ELL WHITE
LP-122-W	REC	4 1/2 IN FORTRESS SOFFIT INLET WHITE
LP-92-W	REC	3 1/2 IN FORTRESS SOFFIT INLET WHITE
LW-122-W	REC	4 1/2 IN FORTRESS WALL INLET WHITE
LW-92-W	REC	3 1/2 IN FORTRESS WALL INLET WHITE
LWF-122-W	REC	4 1/2 IN FORTRESS WALL FLANGE WHITE
SS500EP	REC	SAFE-T-SWITCH CONDENSATE OVERFLOW SWITCH

LUBE



CO-1

DiversiTech

PART #	VENDOR CODE	DESCRIPTION
CO-1	WAG	USE MAR 93240

METALS



GVS26

Metalwest

PART #	VENDOR CODE	DESCRIPTION
GVS26	MLW	3X8 26GA FLAT METAL
GVS28	MLW	3X8 28GA FLAT METAL

MOTORS



5460



40825



45488B



10861

DiversiTech

PART #	VENDOR CODE	DESCRIPTION
5460	WAG	RESCUE BLWR MTR 1/6-1/2HP 4SPD 1075RPM
5470	WAG	RESCUE BLWR MTR 1/5-3/4HP 4SPD 1075RPM
40825	WAG	PKD1/4HP825RPM208-230VTS
43589	WAG	3/4 HP 115V 1075/3SPEED
43732	WAG	1/4 HP 1075 208-230V
45458B	WAG	PKD1/3-1/6MULTI-HP208-230VMTR
45488B	WAG	PKDMULTI-HPCONDENSERFANMTR

MARS

PART #	VENDOR CODE	DESCRIPTION
10860	MAR	AZURE DIGI MOTOR 1/5 - 1/2HP
10861	MAR	AZURE ECM 1/2 - 1HP

PADS



MP-3C



U3X24X36



U3X36X36

DiversiTech

PART #	VENDOR CODE	DESCRIPTION
MP-3C	WAG	ANTI-VIBRATION PAD3X3CORK/RUB
U3X24X36	WAG	3 IN 24 X 36 ULTRALITE PAD
U3X26X26	WAG	3 IN 26 X 26 ULTRALITE PAD
U3X30X30	WAG	3 IN 30 X 30 ULTRALITE PAD
U3X30X40	WAG	3 IN 30 X 40 ULTRALITE PAD
U3X32X32	WAG	3 IN 32 X 32 ULTRALITE PAD
U3X36X36	WAG	3 IN 36X36 ULTRALITE PAD
U3X40X40	WAG	3 IN 40 X 40 ULTRALITE PAD

PARTS



A60048



PFS014

PRO-BUBBLE 32



TFM556



33101



50302



50002883-001/U



C7735A1000/U



Q340A1074/U



R8239A1052/U



ST9120U1011/U



VR8345M4302/U

DiversiTech

PART #	VENDOR CODE	DESCRIPTION
A60048	WAG	5 5/8IN MOTOR MOUNTING BRACKET
PFS010	WAG	FLAME SENSOR REPLACES GOODMAN
PFS013	WAG	FLAME SENSOR REPLACES CARRIER
PFS014	WAG	FLAME SENSOR REPLACES CARRIER
PFS401	WAG	FLAME SENSOR W/ CERAMIC INSUL.
PFS802	WAG	FLAME SENSOR
PRO-BUBBLE 32	WAG	LEAK DETECTOR
PS000	WAG	FIELD ADJUSTABLE SWITCH KIT
TFM55	WAG	TORSION FLEX MOTOR BRACKET
TFM554	WAG	5 5/8 TORSION FLEX BRACKET
TFM556	WAG	TORSION FLEX MOTOR BRACKET

MARS

PART #	VENDOR CODE	DESCRIPTION
33101	MAR	FREEZE STAT OPEN 30 DEG F
43375	MAR	90/120 LP OPEN ON FALL
50302	MAR	120 TO 24V 40VA

Resideo

PART #	VENDOR CODE	DESCRIPTION
50002883-001/U	RSD	FOCUSPRO 5000/6000 3000/4000 COVER PLATE
C7089R1013/U	RSD	WIRELESS OUTDOOR SENSOR
C7089U1006/U	RSD	OUTDOOR SENSOR FOR VISIONPRO 8000
C7189R1004/U	RSD	REDLINK WIRELESS INDOOR SENSOR TEMP/HUM
C7735A1000/U	RSD	DISCHARGE AIR TEMPERATURE SENSOR
CHW3610W8001/U	RSD	WATER LEAK AND FREEZE DETECTOR WI-FI V2
DS06-101-DUS-LF/U	RSD	PRV 3/4 DIALSET FNPT UNION X SWEAT
Q313A1170/U	RSD	THERMOPILE GENERATOR 35IN 2.890HM
Q340A1066/U	RSD	THERMOCOUPLE UNIVERSAL 30MV 18IN
Q340A1074/U	RSD	THERMOCOUPLE UNIVERSAL 30MV 24IN
Q340A1082/U	RSD	THERMOCOUPLE UNIVERSAL 30MV 30IN
Q340A1090/U	RSD	THERMOCOUPLE UNIVERSAL 30MV 36IN
Q340A1108/U	RSD	THERMOCOUPLE UNIVERSAL 30MV 48IN
R8239A1052/U	RSD	FAN CENTER 120/208-240 24V 40VA
S688A1007/U	RSD	AIR FLOW SWITCH/SAIL SWITCH
ST9120U1011/U	RSD	ELECTRONIC FAN TIMER BOARD
VR8345M4302/U	RSD	COMBINATION VALVE. 3/4 X 3/4 REG. SET

PLUMBING PRESS

KM Sales

PART #	VENDOR CODE	DESCRIPTION
11480	KMS	3/4 X 3/4 PRESS 45 ELL SOLD BY EACH
12240	KMS	3/4 X 3/4 PRESS COUPLING SOLD BY EACH
12410	KMS	3/4 X 1/2 PRESS REDUCING CPLG SOLD EA
12420	KMS	1 X 1/2 PRESS REDUCING CPLG SOLD BY EACH
12430	KMS	1 X 3/4 PRESS REDUCING CPLG SOLD BY EACH
13110	KMS	1/2 PRESS TUBE CAP SOLD BY EACH
13120	KMS	3/4 PRESS TUBE CAP SOLD BY EACH
14110	KMS	1/2 PRESS TEE SOLD BY EACH
14140	KMS	3/4 PRESS TEE SOLD BY EACH
14160	KMS	3/4X1/2X3/4 PRESS REDUCING SOLD BY EACH
23260	KMS	1/2 X 1/2 PRESS PXMPT ADPTR SOLD BY EA
23290	KMS	3/4 X 3/4 PRESS P X MPT ADPTR SOLD BY EA



PLUMBING PRESS



870503



870802



871000



871401



871610

Parker Hannifin

PART #	VENDOR CODE	DESCRIPTION
870503	PHC	ZOOMLOCK MAX PRESS 1/2 COUPLING 5 PACK
870505	PHC	ZOOMLOCK MAX PRESS 3/4 COUPLING 2 PACK
870506	PHC	ZOOMLOCK MAX PRESS 7/8 COUPLING 2 PACK
870508	PHC	ZOOMLOCK MAX PRESS 1/4 COUPLING 5 PACK
870509	PHC	ZOOMLOCK MAX PRESS 3/8 COUPLING 5 PACK
870510	PHC	ZOOMLOCK MAX PRESS 5/8 COUPLING 5 PACK
870600	PHC	ZOOMLOCK MAX PRESS 1/4 90 ELBOW 5 PACK
870602	PHC	ZOOMLOCK MAX PRESS 3/8 90 ELBOW 5 PACK
870800	PHC	ZOOMLOCK MAX PRESS RED 3/8 TO 1/4 2 PACK
870801	PHC	ZOOMLOCK MAX PRESS RED 1/2 TO 3/8 2 PACK
870802	PHC	ZOOMLOCK MAX PRESS RED 5/8 TO 1/2 2 PACK
870803	PHC	ZOOMLOCK MAX PRESS RED 3/4 TO 5/8 2 PACK
870804	PHC	ZOOMLOCK MAX PRESS RED 7/8 TO 5/8 2 PACK
870805	PHC	ZOOMLOCK MAX PRESS RED 7/8 TO 3/4 2 PACK
870807	PHC	ZOOMLOCK MAX PRESS RED 1-1/8 TO 7/8 1 PACK
870810	PHC	ZOOMLOCK MAX PRESS RED 5/8 TO 3/8 2 PACK
871000	PHC	ZOOMLOCK MAX PRESS FLR ADPTR 1/4 SAE 4PK
871002	PHC	ZOOMLOCK MAX PRESS FLRE ADPTR 3/8 SAE 4PK
871003	PHC	ZOOMLOCK MAX PRESS FLR ADPTR 1/2 SAE 2PK
871004	PHC	ZOOMLOCK MAX PRESS FLARE ADPTR 5/8 SAE 2P
871005	PHC	ZOOMLOCK MAX PRESS FLARE ADPTR 3/4 SAE 2P
871401	PHC	ZOOMLOCK MAX PRESS 1/4 45 ELBOW 3PACK
871402	PHC	ZOOMLOCK MAX PRESS 3/8 45 ELBOW 3 PACK
871403	PHC	ZOOMLOCK MAX PRESS 1/2 45 ELBOW 3 PACK
871404	PHC	ZOOMLOCK MAX PRESS 5/8 45 ELBOW 3 PACK
871405	PHC	ZOOMLOCK MAX PRESS 3/4 45 ELBOW 3 PACK
871406	PHC	ZOOMLOCK MAX PRESS 7/8 45 ELBOW 3 PACK
871610	PHC	ZOOMLOCK MAX PRESS 3/4 LR 90 ELBOW 2PACK
871611	PHC	ZOOMLOCK MAX PRESS 7/8 LR 90 EL 2PACK
871613	PHC	ZOOMLOCK MAX PRESS 1/2 LR 90 EL 3PACK
871614	PHC	ZOOMLOCK MAX PRESS 5/8 LR 90 EL 3PACK

Reliance Worldwide

PART #	VENDOR CODE	DESCRIPTION
24983	REL	SHARKBITE TEE STOP 1/2 X 1/2 X 1/4 COMP
24985	REL	SHARKBITE TEE STOP 3/4 X 3/4 X 1/4 COMP
22185-0000LF	REL	SHARKBITE BALL VALVE 3/4"
22222-0000LF	REL	SHARKBITE BALL VALVE 1/2"
23337-0000LF	REL	SHARKBITE 1/2 X 1/4 COMP STRAIGHT STOP
25704LF	REL	SHARKBITE THERMAL EXPANSION VALVE 125PSI
SS3088FLEX12LF	REL	CORRUGATED SS 3/4 X 3/4 FIP 12 INCH
SS3088FLEX18L	REL	CORRUGATED SS 3/4 X 3/4 FIP 18
U008LF	REL	STR COUP 1/2X1/2 SHARK BITE
U016LF	REL	STR COUP 3/4X3/4 SHARK BITE LOW LEAD
U058LF	REL	REDUC COUP 3/4X1/2 SHK BITE LOW LEAD
U068LF	REL	SHARKBITE 1/2X3/4 FNPT CONNECT NOLEAD
U072LF	REL	SHARK BITE FITTINGS U072 1/2" FIP STR. CONNECT-NL
U086LF	REL	1 FIP X 3/4 PUSH TO FIT COUPLING
U088LF	REL	SHARK BITE FITTINGS U088 3/4" FIP STR. CONNECT-NL
U120LF	REL	SHARKBITE 1/2 MALE ADAPTOR LOW LEAD



U248LF



U3088FLEX10BVLF



U412LF



U518LF



UR3088FX18

Reliance Worldwide

PART #	VENDOR CODE	DESCRIPTION
U134LF	REL	SHARKBITE 3/4 MALE ADAPTOR LOW LEAD
U248LF	REL	SHARK BITE ELBOW 1/2X1/2
U256LF	REL	SHARK BITE ELBOW 3/4X3/4
U3088FLEX12LF	REL	SHARKBITE SS WH CONN 3/4" X 3/4" FIP X 12"
U3088FLEX18BVLF	REL	SHARKBITE SS WH CONN W/BALL VALVE 3/4" X 3/4" FIP X 18"
U3088FLEX18LF	REL	SHARKBITE SS WH CONN 3/4" X 3/4" FIP X 18"
U3486LF	REL	3/4 X 3/4 X 3/4 FIP BRANCH REPAIR TEE
U362LF	REL	SHK BITE TEE 1/2X1/2X1/2 LOW LEAD
U370LF	REL	SHK BITE TEE 3/4X3/4X3/4 LOW LEAD
U412LF	REL	SHK BITE TEE 3/4X3/4X1/2 LOW LEAD
U4482LF	REL	SERVICE SLIP TEE ADAPTER 1/2X1/2X1/2
U514LF	REL	SHARK BITE END STOP 1/2"
U518LF	REL	SHARK BITE END STOP 3/4"
U702	REL	SHARKBITE SAFE SEAL GAUGE
U711	REL	SHARKBITE 1/2" DISCONNECT FORK
U713	REL	SHARK BITE DISCONNECT TONGS 3/4"
UR22185	REL	SHARKBITE BALL VALVE 3/4"
UR3088FX18	REL	SHARKBITE SS WH CONN 3/4" X 3/4" FIP X 18"
UR3088FX18BV	REL	SHARKBITE SS WH CONN W/BALL VALVE 3/4" X 3/4" FIP X 18"

PLUMBING



AM101-USTG-1LF/U

Resideo

PART #	VENDOR CODE	DESCRIPTION
AM101-USTG-1LF/U	RSD	MIXING VALVE 70-145F W/TEMP GAUGE
AMX300TLF/U	RSD	8IN DIRECT CONNECT WATER HEATER KIT

PVC TRAPS



488-007

DiversiTech

PART #	VENDOR CODE	DESCRIPTION
488-007	WAG	3/4 IN PVC R-TRAP
489-007	WAG	3/4 PVC P-TRAP

RAILS



317322

Hardcast

PART #	VENDOR CODE	DESCRIPTION
317322	HRD	PUSH ON RAIL JR SOLD BY 1-10 FOOT PIECE

RELAYS



R8222D1014/U

Resideo

PART #	VENDOR CODE	DESCRIPTION
R8222D1014/U	RSD	GENERAL PURPOSE RELAY

SCREWS



BT131T

Malco

PART #	VENDOR CODE	DESCRIPTION
BT131T	MAL	BIT TIP SCREW 1/4 X 1/2 (1000 PACK)
BT133T	MAL	BIT TIP SCREW 1/4 X 3/4 (500 PACK)
BT141T	MAL	BIT TIP SCREW 5/16 X 1/2 (500 PACK)
BT143T	MAL	BIT TIP SCREW 5/16 X 3/4 (500 PACK)
HW8X1ZT	MAL	1 IN HEX WASHER ZIP SCREW (500 PK)



PRESS FITTINGS



777090



777104



777109



777115



777138



777142



777148

Parker Hannifin

PART #	VENDOR CODE	DESCRIPTION
777090	PHC	ZOOMLOCK PUSH REMOVAL TOOL
777091	PHC	ZOOMLOCK PUSH INSTALLATION KIT
777100	PHC	1/4 COUPLING - R410A OPTIMIZED ZOOMLOCK
777101	PHC	3/8 COUPLING - R410A OPTIMIZED ZOOMLOCK
777102	PHC	1/2 COUPLING - R410A OPTIMIZED ZOOMLOCK
777104	PHC	3/4 COUPLING - R410A OPTIMIZED ZOOMLOCK
777106	PHC	1/4 FLARE TO PUSH - R410A OPTIMIZED ZOO
777108	PHC	1/2 FLARE TO PUSH - R410A OPTIMIZED ZOO
777109	PHC	5/8 FLARE TO PUSH - R410A OPTIMIZED ZOO
777110	PHC	1/4 90 DEG ELBOW - R410A OPTIMIZED ZOOM
777111	PHC	3/8 90 DEG ELBOW - R410A OPTIMIZED ZOOM
777112	PHC	1/2 90 DEG ELBOW - R410A OPTIMIZED ZOOM
777114	PHC	3/4 90 DEG ELBOW - R410A OPTIMIZED ZOOM
777115	PHC	7/8 90 DEG ELBOW - R410A OPTIMIZED ZOOM
777133	PHC	1/4 COUPLING - REMOVABLE ZOOMLOCK
777134	PHC	3/8 COUPLING - REMOVABLE ZOOMLOCK
777135	PHC	1/2 COUPLING - REMOVABLE ZOOMLOCK
777136	PHC	5/8 COUPLING - REMOVABLE ZOOMLOCK
777137	PHC	3/4 COUPLING - REMOVABLE ZOOMLOCK
777138	PHC	7/8 COUPLING - REMOVABLE ZOOMLOCK
777139	PHC	1/4 FLARE TO PUSH - REMOVABLE ZOOMLOCK
777141	PHC	1/2 FLARE TO PUSH - REMOVABLE ZOOMLOCK
777142	PHC	5/8 FLARE TO PUSH - REMOVABLE ZOOMLOCK
777144	PHC	3/8 90 DEG ELBOW - REMOVABLE ZOOMLOCK
777145	PHC	1/2 90 DEG ELBOW - REMOVABLE ZOOMLOCK
777147	PHC	3/4 90 DEG ELBOW - REMOVABLE ZOOMLOCK
777148	PHC	7/8 90 DEG ELBOW - REMOVABLE ZOOMLOCK

THERMOSTATS



S84NIH1C

Research Products Corporation

PART #	VENDOR CODE	DESCRIPTION
S84N1H1C	RSP	TSTAT CAPACITIVE TOUCH SS 1H/1C
S84NSU	RSP	TSTAT 1H/1C OR 2H/1C HP
S86NMU	RSP	STAT 2HT/2CL 4HT/2CL TOUCH PROGRAMABLE
S86NMUPR	RSP	STAT 2HT/2CL 4HT/2CL W/IAQ TOUCH
S86WMUPR	RSP	STAT 2HT/2CL 4HT/2CL WI-FI W/IAQ RELAY

Resideo

PART #	VENDOR CODE	DESCRIPTION
T8034N1007/U	RSD	STAT 1HT/1CL MERC FREE HORZ
T812A1002/U	RSD	STAT 24V SNAP ACTION 50F TO95F HEAT ONLY
T822K1018/U	RSD	STAT SNAP ACTION 1STG HT ONLY
T834N1002/U	RSD	STAT 1HT/1CL MERC FREE VERT
TG511A1000/U	RSD	STAT GUARD H6-1/2 W7-1/2 D2-15/16



T8034N1007/U



TG511A1000/U

THERMOSTATS



TH1100DV1000/U



TH6220U2000/U



TH8321WF1001/U



THM6000R7001/U



YTH6320R1001/U



YTHX9421R5085WW/U



YTHX9421R5127WW/U

Resideo

PART #	VENDOR CODE	DESCRIPTION
TH1100DV1000/U	RSD	PRO 1000 VERTICLE NON-PROGRAMABLE STAT
TH4110U2005/U	RSD	STAT T4 PROG 1HT/1CL OR 1HT/1CL
TH6210U2001/U	RSD	STAT T6 PROG 2HT/1CL OR 1HT/1CL
TH6220U2000/U	RSD	STAT T6 PROG 2HT/1CL OR 2HT/2CL
TH6220WF2006/U	RSD	STAT T6 WI-FI PROG 2HT/1CL OR 2HT/2CL
TH6320R1004/U	RSD	STAT WIRELESS FOCUSPRO 5/1/1 PROG
TH8110R1008/U	RSD	STAT NEW VISIONPRO 7D PROG 1HT/1CL TOUCH
TH8320R1003/U	RSD	STAT NEW VISIONPRO UNVRSL 3HT/2CL TOUCH
TH8321R1001/U	RSD	STAT NEW VISIONPRO W/REDLINK 3H/2C HUM
TH8321WF1001/U	RSD	STAT WIFI VISIONPRO 3H/2C HUM
TH9320WF5003/U	RSD	STAT WI-FI COLOR TOUCH SCREEN 3H/2C PROG
THM5421R1021/U	RSD	REDLINK ENABLED EQUIPMENT INTERFACE MOD
THM6000R7001/U	RSD	REDLINK ENABLED INTERNET GATEWAY
THP2400A1080/U	RSD	DECORATIVE COVER PLATE FOR T6
THX321WFS2001W	RSD	TSTAT T10 PRO SMART W/REDLINK SENSOR
THX9421R5021WW/U	RSD	STAT IAQ WITH REDLINK 7DAY 4H/2C HP 3H/2
YTH6320R1001/U	RSD	STAT WIRELESS FOCUSPRO KIT PROGRAM
YTH8321R1002/U	RSD	STAT VISIONPRO W/REDLINK GATEWAY 3H/2C
YTHM1004R3001/U	RSD	T10+ PROSMART KIT WITH EIM
YTHM5421R1010/U	RSD	REDLINK ENABLED EQUIPMENT INTERFACE MOD
YTHX9421R5085WW/U	RSD	STAT PRESTIGE IAQ 2 WIRE THERMOSTAT KIT
YTHX9421R5101WW/U	RSD	STAT PRESTIGE IAQ 2 WIRE THERMOSTAT KIT
YTHX9421R5127WW/U	RSD	STAT KIT PRESTIAGE 2 WIRE IAQ

TAPES



1400



1507-W



1599B-BLK



7-18



78941

Berry Global

PART #	VENDOR CODE	DESCRIPTION
1400	BRR	3M ECONOMY VINYL ELECTRICAL TAPE
1500-BLK	BRR	BLACK DUCT TAPE 2 X 60 YD
1500-SIL	BRR	SILVER DUCT TAPE 2 X 60 YD
1507-B	BRR	BLACK LINE SET TAPE UV RESISTANT
1507-W	BRR	WHITE LINE SET TAPE UV RESISTANT
1525CWNT	BRR	3 IN FSK TAPE
1581A	BRR	FOIL TAPE W/IDEN 2.5 X 60 YD
1599B-BLK	BRR	BLACK FLEX DUCT TAPE W/UL I.D. 2X120YD
1599B-SIL	BRR	SILVER FLEX DUCT TAPE W/UL I.D. 2X120YD
3520CW	BRR	FOIL TAPE 2.0 X 50 YD

DiversiTech

PART #	VENDOR CODE	DESCRIPTION
6-9718	WAG	TAPE FOAM 1/8IN X 2IN X 30FT

MARS

PART #	VENDOR CODE	DESCRIPTION
78941	MAR	1/2X520 WHITE TAPE



TOOLS



DiversiTech

PART #	VENDOR CODE	DESCRIPTION
RLF-8	WAG	RADIANT LEAK FINDER™ 8OZ
T-400	WAG	FIN TOOL SUPERCOMB PK OF 6
T-417	WAG	FIN COMB 16 AND 17 FPI



Malco

PART #	VENDOR CODE	DESCRIPTION
C5R	MAL	MALCO C5R 5 BLADE SHEET METAL CRIMPER 53439 (63917)
C6R	MAL	OFFSET CRIMPER
CT425	MAL	TAPE MEASURE 1 X 25 FT
DS1	MAL	MALCO DS1 16 DUCT STRETCHER 50122 (14425)
DS2	MAL	MALCO DS2 16 OFFSET DUCT STRETCHER 50124 (14433)
HSW97	MAL	6 1/4 IN VENT HOLE SAW
HW7X1/2ZT	MAL	HEX WASHER ZIP IN SCREWS (1000 PAK)
HW8X11/2ZT	MAL	HEX WASHER ZIP IN (250 PAK)
HW8X2ZT	MAL	HEX WASHER ZIP IN (250 PAK) 1/4 IN
HW8X3/4ZT	MAL	HEX WASHER ZIPIN SCREWS (1000 PK) 1/4 HE L9M
M2001	MAL	MALCO M2001 MAX2000 AVIATION SNIP LEFT CUT 52617 (17598)
M2002	MAL	MALCO M2002 MAX2000 AVIATION SNIP RIGHT CUT 52618 (17606)
M2003	MAL	MALCO M2003 MAX2000 AVIATION SNIP COMBO CUT 52619 (17622)
M2005	MAL	MALCO M2005 MAX2000 BULLDOG AVIATION SNIP NOTCH AND TRIMMING 52620 (17638)
M2006	MAL	MALCO M2006 MAX2000 OFFSET AVIATION SNIP LEFT CUT 52621 (20946)
M2007	MAL	MALCO M2007 MAX2000 OFFSET AVIATION SNIP RIGHT CUT 52622 (20947)
MC14N	MAL	TRUTL7-25 7X25" CHIMNEY KIT (7ALK25)(7RLK25)(15799)
MSH1/4T	MAL	1/4 IN HEX CHUCK DRIVER
MSH5/16T	MAL	5/16 IN HEX CHUCK DRIVER
MSHC	MAL	MALCO MSHC 1/4 RED AND 5/16 YELLOW DUAL-SIDED CLEANABLE REVERSIBLE HEX DRIVER 2 LENGTH 54717 (190392)
MSHL1/4T	MAL	1/4 IN X 2-9/16 LONG HEX CHUCK DRVR
MSHL5/16T	MAL	5/16 IN LONG HEX CHUCK DRVR
MSHXL1/4T	MAL	1/4 X 6 LONG HEX DRIVER
MSHXL5/16T	MAL	5/16 X 6 LONG HEX DRIVER
MSHXL	MAL	MALCO MSHXLC 1/4 RED AND 5/16 YELLOW DUAL-SIDED CLEANABLE REVERSIBLE HEX DRIVER 6 LENGTH 54968 (202665)
PA1012KW	MAL	ANCHOR KIT 1/4 X #10X1Z
RRW3/16	MAL	MALCO RRW316 3/16 HEX KEY RATCHET WRENCH INSERT 50600 (473)
RRW5/16	MAL	BIT
S2R	MAL	EL-03L26 1 COMPRESSION EMT
S3R	MAL	IBN12X30 1/2 X 30 BLACK NIPPLE (15316)
S6R	MAL	MALCO S6R 6 HAND SEAMER FORGED STEEL JAWS 53445 (64728)
SC3R	MAL	3 BLADE CRIMPER
SH3	MAL	18OZ SETTING HAMMER
SL1R	MAL	MALCO SL1R SNAP LOCK PUNCH FOR SHEET METAL 53451 (64727)
TS DC	MAL	TURBO SHEAR DRILL CLAMP
TS1	MAL	MALCO TS1 ORIGINAL TURBOSHEAR CONVERTS YOUR POWER DRILL TO A POWER SHEAR 53020 (36596)
TY4G	MAL	MALCO TY4G CABLE TIE TENSIONING TOOL WITH MANUAL CUT OFF AND GRIPS 52143 (788)



MARS

PART #	VENDOR CODE	DESCRIPTION
78805	MAR	3/4OD 5/8ID FIT BRUSH (2)
78806	MAR	7/8 OD 3/4 ID FIT BRUSH
78818	MAR	3/8X3/4 REFRIG 4-1 BRUSH TOOL
78833	MAR	FIN & COIL WHISK BRUSH 6
78834	MAR	FIN & COMB SCRAPING TOOL ADJ
78910	MAR	PLSTC HANDLE STNLS BRUSH
78924	MAR	1 1/2X10YD NYLON MESH CLOTH
78931	MAR	SOLDER HEAT SHIELD 9 X 1
79350	MAR	1 1/4 RD INSP MIRROR
79351	MAR	2 1/4 RD INSP MIRROR
79358	MAR	2 1/4 ROUND MAGNIFY MIRROR

Nu-Calgon

PART #	VENDOR CODE	DESCRIPTION
4051-99	NUC	A/C PIERCING VALVE AND HOSE
4768-W3	NUC	HAND HELD SPRAYER
4771-3	NUC	2 GALLON 220CP POLY SPRAYER
4773-0	NUC	CLEAN CONNECT SPRAYER
4774-0	NUC	NU-CALGON SPRAYER HOSE END GUN TYPE
4774-1	NUC	NU-CALGON 4774-1 COIL GUN PROBE NOT RECOMMENDED FOR SPINE FIN (126180)

Ritchie

PART #	VENDOR CODE	DESCRIPTION
18975	RIT	1/4" CORE/VACUUM/CHG
18986	RIT	R-410A CRT 5/16 X1/4 X1/4
19011	RIT	PKG. 10 CH-11 BULK GASKETS
21985	RIT	3-PAK HAV-60 -RYB-
22985	RIT	CHARGING HOSE 60 3 PACK LOW LOSS SR
22986	RIT	3-PAK HAVS-72 -RYB-
29211	RIT	5/16 BLUE FLEXFLOW HOSE
29425	RIT	R410A-BV60 EU BLUE HOSE
29465	RIT	R410A-BV60 EU RED HOSE
40870	RIT	P51-870 TITAN
41099	RIT	2005 MANIFOLD REPAIR KIT
41123	RIT	1/4" LIQUID CHARGING
42001	RIT	MANIFOLD NO HOSES R22 R404A R410A
46062	RIT	DIGITAL MANIFOLD HBVV-60
49017	RIT	DIGITAL GAUGE
49915	RIT	4V KPA 32/410A MANIFLD NZ
60101	RIT	USE I-E TC1000
60121	RIT	MINI CUTTER 1/8 TO 7/
60160	RIT	MINI TUBE CUTTER
60241	RIT	ECCENT FLARE-DRILL DRV-IN
60390	RIT	3 IN 1 BENDER
60407	RIT	COMPLETE EXPANDER KIT
60460	RIT	MULTI SWAGING PUNCH
60613	RIT	STANDARD RATCHET WREN
60616	RIT	OFFSET SERVICE WRENCH
60648	RIT	ADJUSTABLE TORQUE WRENCH
60993	RIT	MINI-SPLIT TOOL KIT W/ DIG TORQ WRENCH
63325	RIT	ALLOY DLX RATCHET HAND BENDER
63342	RIT	REVERSE BEND ADAPTER UNIVERSAL
67002	RIT	MANTOOTH DUAL PT MODULE
67060	RIT	YJACK PATH
67061	RIT	YJACK TEMPERATURE CLAMP
67062	RIT	YJACK TEMPERATURE STRAP
67063	RIT	YJACK PSYCHROMETER
67070	RIT	KIT 2 YJACK TEMP CLAMPS 1 YJACK PATH
67071	RIT	KIT 2 T CLAMPS 2 YJACK PSY 1 YJACK PA
68864	RIT	WIRELESS REFRIGERANT SCALE
69020	RIT	OMNI VACUUM GAUGE 1/4
69320	RIT	ACCUProbe IR REFRIGERANT LEAK DETECTOR
69373	RIT	CUMBUSTIBLE LEAK DET/
93844	RIT	BALL VALVE 1/4 MFLX

TOOLS



19003-YJ



41118-YJ



HRF-1



RPL-2

Ritchie

PART #	VENDOR CODE	DESCRIPTION
93886	RIT	SUPEREAC SYSTEM 3 - 1/2
93887	RIT	MAXFLOW EVACUATION KIT
95762	RIT	RECOVER-XLT UNIT W/ TOS
19003-YJ	RIT	YELLOW JACKET HOSE MAINTENANCE KIT
19020-YJ	RIT	PKG.10 CH-20 BULK GASKETS
19048-YJ	RIT	HOSE GASKET REMOVAL KIT
41118-YJ	RIT	YELLOW JACKET O-RING LUBRICANT

Sensible Products

PART #	VENDOR CODE	DESCRIPTION
CS-1	SEN	COOL STOOL
HRF-1	SEN	HIGH BEAM RECHARGEABLE FLASHLIGHT
RPL-2	SEN	700 LUMEN LED LIGHT W/LASER POINTER

TOWELS



ST-10

DiversiTech

PART #	VENDOR CODE	DESCRIPTION
ST-10	WAG	TOWEL H/D SHOP 13X16PK OF 10

TRANSFORMERS



AT140A1018/U



AT72D1683/U

Resideo

PART #	VENDOR CODE	DESCRIPTION
AT140A1018/U	RSD	TRANSFORMER 120/208/240V 24V 40VA
AT150F1022/U	RSD	TRANSFORMER 120/208/240 PRIM 24V 50VA
AT175F1023/U	RSD	TRANSFORMER UNI 120/208/240 24V 75VA
AT72D1683/U	RSD	TRANSFORMER 120/24V 40VA

UNIT HEATERS



QSWI3000

DiversiTech

PART #	VENDOR CODE	DESCRIPTION
QSWI3000	WAG	QUICK SWIVEL - 3000

UV LIGHTS



UC100E1006/U

Resideo

PART #	VENDOR CODE	DESCRIPTION
UC100E1006/U	RSD	REPLACEMENT LAMP FOR UV100E1006 OR

V-BELTS



94327



94343

MARS

PART #	VENDOR CODE	DESCRIPTION
94327	MAR	A23/4L250
94339	MAR	A-35/4L370
94340	MAR	A-36/4L380
94341	MAR	A-37/4L390
94342	MAR	A-38/4L400
94343	MAR	A-39/4L410
94344	MAR	A-40/4L420
94345	MAR	A-41/4L430
94346	MAR	A-42/4L440
94347	MAR	A-43/4L450
94348	MAR	A-44/4L460
94349	MAR	A-45/4L470
94352	MAR	A-48/4L500
94359	MAR	A-55/4L570

VALVES



56105NL



65355

Wolverine Brass

PART #	VENDOR CODE	DESCRIPTION
56105NL	PPG	ProSeries 1/2 FIP Full Port Ball Valve

Bell and Gossett

PART #	VENDOR CODE	DESCRIPTION
65355	PPG	PRESSURE RELIEF VALVE

WASHERS



6724

DiversiTech

PART #	VENDOR CODE	DESCRIPTION
6724	WAG	FENDER WASHER 3/8IN ZINC PLTD

WASP KILLER



93226

MARS

PART #	VENDOR CODE	DESCRIPTION
93226	MAR	CRC WASP & HORNET KILLER II

QUICK STRAPS



QS-U

Reliance Worldwide Corporation

PART #	VENDOR CODE	DESCRIPTION
QS-U		Expansion Tank Straps - 5 Gallon Capacity

ZIP TIES



7-P36



D61A-4



WC08

DiversiTech

PART #	VENDOR CODE	DESCRIPTION
7-P36	WAG	CABLE TIE 36IN NATURAL
7-P48	WAG	CABLE TIE 48IN NATURAL
D60A-4	WAG	BRS 1/4 COMPRESSION SLEEVE
D61A-4	WAG	BRS 1/4 COMPRESSION NUT
WC04	WAG	CABLE CLAMP 1/4IN - PK OF 35
WC04C	WAG	CLAMPW/C1/4IN DIA-PK OF 100
WC08	WAG	CLAMPS WIRE - .5IN PK OF 25
WC08C	WAG	CLAMPW/C1/2IN DIA. PK OF 100

ZONE VALVES



V8043E1012/U

Resideo

PART #	VENDOR CODE	DESCRIPTION
V8043E1012/U	RSD	ZONE VALVE 3/4 SWT 3.5CV 20PSI CLOSE
V8043E1061/U	RSD	ZONE VALVE 3/4 SWT 8CV 8PSI CLOSE

ZONING

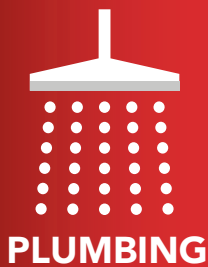


HZ311K/U

Resideo

PART #	VENDOR CODE	DESCRIPTION
HZ311K/U	RSD	TRUE ZONE KIT 1H/1C 3 ZONES CNT
HZ322K/U	RSD	TRUE ZONE KIT 2H/2C 3 ZONES CNT
HZ432K/U	RSD	TRUE ZONE KIT 3H/2C 4 ZONES
M847D-ZONE/U	RSD	ZONE DAMPER ACTUATOR FOR ARD AND ZD





BALL VALVES

Wolverine Brass



77315



54068NLW



56108NL



56271NL

PART #	VENDOR CODE	DESCRIPTION
77315	PPG	WOLV-XPEX 1/2" PEX (F1960) FULL PORT BALL VALVE
77316	PPG	WOLV-XPEX 3/4" PEX (F1960) FULL PORT BALL VALVE
54067NLW	PPG	WOLV-BITE 1/2" PUSH-FIT BRASS FULL PORT BALL VALVE
54068NLW	PPG	WOLV-BITE 3/4" PUSH-FIT BRASS FULL PORT BALL VALVE
56105NL	PPG	PROSERIES 1/2" FIP FULL PORT BALL VALVE
56106NL	PPG	PROSERIES 3/4" FIP FULL PORT BALL VALVE
56108NL	PPG	PROSERIES 1/2" C FULL PORT BALL VALVE
56109NL	PPG	PROSERIES 3/4" C FULL PORT BALL VALVE
56211NL	PPG	PROSERIES 1/2" PEX (F1807) FULL PORT BALL VALVE
56212NL	PPG	PROSERIES 3/4" PEX (F1807) FULL PORT BALL VALVE
56270NL	PPG	PROSERIES 1/2" PRESS BALL VALVE
56271NL	PPG	PROSERIES 3/4" PRESS BALL VALVE

CHEMICALS



51653

Wolverine Brass

PART #	VENDOR CODE	DESCRIPTION
51653	PPG	BEAST BIODRAIN POWDER 2LBS.

COMMERCIAL FAUCETS

Wolverine Brass



33071



33604

PART #	VENDOR CODE	DESCRIPTION
33071	PPG	ETERNITY DECK MOUNTED CENTERSET FAUCET WITH 4" CENTERS, WRIST BLADE HANDLES
33500	PPG	EASY-PUSH CENTERSET METERING FAUCET
33501	PPG	EASY-PUSH SINGLE SUPPLY METERING FAUCET
33604	PPG	ETERNITY DECK MOUNTED CENTERSET COMMERCIAL FAUCET WITH 8" CENTERS, WRIST BLADE HANDLES

DRAINS



56096

Wolverine Brass

PART #	VENDOR CODE	DESCRIPTION
56096	PPG	1-1/4 X 6" CAST BRASS GRID DRAIN WITH OVERFLOW HOLES CHROME PLATED

FAUCET CONNECTORS



57572

Wolverine Brass

PART #	VENDOR CODE	DESCRIPTION
57572	PPG	3/8" OD X 1/2" FIP X 12" STAINLESS STEEL FAUCET CONNECTOR
57573	PPG	3/8" OD X 1/2" FIP X 16" STAINLESS STEEL FAUCET CONNECTOR
57574	PPG	3/8" OD X 1/2" FIP X 20" STAINLESS STEEL FAUCET CONNECTOR

FAUCET REPAIR



16155

T&S Brass

PART #	VENDOR CODE	DESCRIPTION
16155	PPG	RIGHT HAND HOT STEM WITH BARREL LESS BONNET FOR SWIVEL BASE FAUCETS
16156	PPG	LEFT HAND COLD STEM WITH BARREL LESS BONNET FOR SWIVEL BASE FAUCETS



30801



30837

Delta

PART #	VENDOR CODE	DESCRIPTION
30801	PPG	CARTRIDGE ASSEMBLY FOR MONITOR PRESSURE BALANCE TUB AND SHOWER FAUCET
30805	PPG	CARTRIDGE ASSEMBLY FOR MULTICHOICE UNIVERSAL VALVES
30837	PPG	REPAIR PBV CART FOR 1500/1700



31113

PlumbMaster Approved

PART #	VENDOR CODE	DESCRIPTION
31113	PPG	POSI-TEMP SINGLE-HANDLE REPLACEMENT CARTRIDGE FOR MOEN



90516



9346257



97005W

Wolverine Brass

PART #	VENDOR CODE	DESCRIPTION
90516	PPG	TWIST WASTE WITH 3-1/2" X 1-1/2" OR 2" OUTLET OVERFLOW OUTLET NICKEL
90526	PPG	LEVER WASTE WITH 3-1/2" X 1-1/2" OR 2" OUTLET OVERFLOW OUTLET NICKEL
9346257	PPG	ETERNITY WALL MOUNTED CENTERSET DOUBLE SERVICE FAUCET WITH 8" CENTERS, WRIST BLADE HANDLES, 8" SWING SPOUT
97004W	PPG	HOSE WITH HANDLE, FOR PRE-RINSE WALL MOUNTED SINGLE SERVICE FAUCET, 44"
97005W	PPG	SPRAY VALVE ASSEMBLY WITH LOCKING RING, FOR PRE-RINSE FAUCET, CHROME

Chicago Faucets

PART #	VENDOR CODE	DESCRIPTION
16132NL	PPG	RIGHT HAND SHORT STEM CERAMIC CARTRIDGE
16133NL	PPG	LEFT HAND SHORT STEM CERAMIC CARTRIDGE



16132NL

FAUCET REPAIR



PlumbMaster Approved

PART #	VENDOR CODE	DESCRIPTION
17000NL	PPG	ETERNA SPINDLE ASSEMBLY (GENERIC), RIGHT HAND HOT FOR T&S BRASS
17001NL	PPG	ETERNA SPINDLE ASSEMBLY (GENERIC), LEFT HAND COLD FOR T&S BRASS

FAUCETS



Wolverine Brass

PART #	VENDOR CODE	DESCRIPTION
85920	PPG	FINALE SINGLE HANDLE CENTERSET BATHROOM FAUCET WITH POP-UP, CHROME
85926	PPG	FINALE PULL-DOWN KITCHEN FAUCET IN CHROME
86330	PPG	ARTIS TWO HANDLE CENTERSET BATHROOM FAUCET WITH POP-UP, CHROME
86430	PPG	ARTIS TWO HANDLE WIDESPREAD BATHROOM FAUCET WITH POP-UP, CHROME
86451	PPG	ARTIS PULL DOWN KITCHEN FAUCET IN STAINLESS STEEL
93363	PPG	WALL MOUNT SERVICE SINK FAUCET WITH VACUUM BREAKER & INTEGRAL SHUT-OFF SHANKS
863306	PPG	ARTIS 2 HANDLE CENTERSET BATH FAUCET W/POP-UP, MATTE BLACK
864306	PPG	ARTIS 2 HANDLE WIDESPREAD BATH FAUCET W/POP-UP, MATTE BLACK
9333557	PPG	DECK MOUNT DOUBLE SERVICE FIXTURE WITH SWING SPOUT & CROSS HANDLE, 2 HOLE, POLISHED CHROME

FITTINGS



Apollo

PART #	VENDOR CODE	DESCRIPTION
50038	PPG	1/2" APOLLOXPRESS FITTING STOCK-EZ KIT
50039	PPG	3/4" APOLLOXPRESS FITTING STOCK-EZ KIT

Wolverine Brass

PART #	VENDOR CODE	DESCRIPTION
50075	PPG	1/2" PRESS STOCK EZ KIT
50076	PPG	3/4" PRESS STOCK EZ KIT

GARBAGE DISPOSALS



Wolverine Brass

PART #	VENDOR CODE	DESCRIPTION
85495	PPG	1/2 HP BEAST MINI DISPOSAL
85496	PPG	3/4 HP BEAST MINI DISPOSAL

SHOWER FIXTURES



Delta

PART #	VENDOR CODE	DESCRIPTION
51077	PPG	WHITE PLASTIC HAND SHOWER WITH PUSH-BUTTON, 2.5 GPM AT 80 PSI

PlumbMaster Approved

PART #	VENDOR CODE	DESCRIPTION
51173	PPG	BUNGEE PERSONAL SHOWER HOSE, 59 TO 78"

SHOWER FIXTURES



Wolverine Brass

PART #	VENDOR CODE	DESCRIPTION
85677T	PPG	FINALE SINGLE HANDLE PRESSURE BALANCED TUB & SHOWER, CHROME (TRIM ONLY)
85680T	PPG	ARTIS SINGLE HANDLE PRESSURE BALANCED TUB & SHOWER, CHROME (TRIM ONLY)
85680T6	PPG	ARTIS SINGLE HANDLE PB T/S TRIM, MATTE BLACK
85681T6	PPG	ARTIS SINGLE HANDLE PB SHOWER TRIM, MATTE BLACK

SHOWER VALVES



Wolverine Brass

PART #	VENDOR CODE	DESCRIPTION
85666V	PPG	SOLID FORGED BRASS COMPACT BODY PRESSURE BALANCE VALVE MIP/SWEAT
85666VP	PPG	SOLID FORGED BRASS COMPACT BODY PRESSURE BALANCE VALVE PRESS
85666VE	PPG	SOLID FORGED BRASS COMPACT BODY PRESSURE BALANCE VALVE PEX EXPANSION
85666VCR	PPG	SOLID FORGED BRASS COMPACT BODY PRESSURE BALANCE VALVE PEX CRIMP

SILLCOCKS



Wolverine Brass

PART #	VENDOR CODE	DESCRIPTION
58375	PPG	PROSERIES FROST PROOF SILLCOCK 1/2" CRIMP X 8"
58376	PPG	PROSERIES FROST PROOF SILLCOCK 1/2" CRIMP X 10"
58377	PPG	PROSERIES FROST PROOF SILLCOCK 1/2" CRIMP X 12"

SINK STRAINERS AND ACCESSORIES



Wolverine Brass

PART #	VENDOR CODE	DESCRIPTION
52810	PPG	POSI-LOCK DEEP DISH SINK STRAINER WITH 2 X BRASS NUTS STAINLESS
52813W	PPG	DELUXE DUO SINK STRAINER WITH 2" BRASS NUTS CHROME

STOPS



Wolverine Brass

PART #	VENDOR CODE	DESCRIPTION
83470	PPG	5/8" COM X 3/8" COM 1/4 TURN CERAMIC DISC ANGLE STOP
83471	PPG	5/8" COM X 3/8" COM 1/4 TURN CERAMIC DISC STRAIGHT STOP
56320NL	PPG	5/8" OD X 3/8" COMPRESSION CHROME PLATED SOLID FORGED BRASS 1/4-TURN ANGLE SUPPLY STOP
56350NL	PPG	5/8" COMPRESSION X 3/8" OD COMPRESSION CHROME PLATED SOLID FORGED BRASS 1/4-TURN STRAIGHT SUPPLY STOP
84473NL	PPG	1/2" PEX X 3/8" COMPRESSION CHROME PLATED SOLID FORGED BRASS 1/4-TURN STRAIGHT SUPPLY STOP
84487NL	PPG	1/4" COMPRESSION X 5/8" OD COMPRESSION CHROME PLATED SOLID FORGED BRASS 1/4 TURN ICE MAKER ANGLE SUPPLY STOP

TOILET CONNECTORS



Wolverine Brass

PART #	VENDOR CODE	DESCRIPTION
57664	PPG	3/8" OD X 7/8" BALLCOCK X 9" STAINLESS STEEL TOILET CONNECTOR
57665	PPG	3/8" OD X 7/8" BALLCOCK X 16" STAINLESS STEEL TOILET CONNECTOR
57670	PPG	3/8" OD X 7/8" BALLCOCK X 12" STAINLESS STEEL TOILET CONNECTOR

TOILET REPAIR



Wolverine Brass

PART #	VENDOR CODE	DESCRIPTION
39710	PPG	SLOW CLOSE AND QUICK INSTALL ELONGATED TOILET SEAT
39711	PPG	SLOW CLOSE AND QUICK INSTALL ROUND TOILET SEAT
51164	PPG	BIG ORANGE PREMIUM TANK FLAPPER, ORANGE
51446	PPG	SOLID BRASS SET FAST SELF-ADJUSTING CLOSET BOLT, 5/16" DIA X 2-1/4" L
57741	PPG	FINALE ULTIMATE FILL VALVE WITH BRASS SHANK



Bemis

PART #	VENDOR CODE	DESCRIPTION
41180	PPG	HEAVY-DUTY OPEN FRONT ELONGATED PLASTIC TOILET SEAT WITHOUT COVER, WHITE



Harvey

PART #	VENDOR CODE	DESCRIPTION
51501	PPG	WAX BOWL GASKET 4" LINE



Sloan

PART #	VENDOR CODE	DESCRIPTION
70558	PPG	CLOSET RENOVATOR REPAIR KIT FOR 3.5 GPF CLOSET FLUSH VALVES
70559	PPG	CLOSET RENOVATOR REPAIR KIT FOR 1.6 GPF CLOSET FLUSH VALVES
70560	PPG	URINAL RENOVATOR REPAIR KIT FOR 1.0 GPF URINAL FLUSH VALVES
70599	PPG	CLOSET RENOVATOR REPAIR KIT FOR 4.5 GPF CLOSET FLUSH VALVES



TOILET REPAIR



Sloan

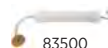
PART #	VENDOR CODE	DESCRIPTION
70600	PPG	URINAL RENOVATOR REPAIR KIT FOR 1.5 GPF URINAL FLUSH VALVES
70777	PPG	VACUUM BREAKER, 1-1/2", 9" L, CHROME PLATED
71047	PPG	MANUAL OPERATE DIAPHRAGM EXPOSED URINAL FLUSHOMETER, 1.0 GPF, 3/4" TOP SPUD
71048	PPG	MANUAL OPERATE DIAPHRAGM EXPOSED WATER CLOSET FLUSHOMETER, 1.6 GPF, 1-1/2" TOP SPUD



PlumbMaster Approved

PART #	VENDOR CODE	DESCRIPTION
71398	PPG	CLOSET GASKET WITH ADHESIVE, 3-9/32" ID X 5-5/32" OD X 3/4" T

TOOLS



PlumbMaster Approved

PART #	VENDOR CODE	DESCRIPTION
83500	PPG	METAL TOILET SUCTION GUN

TUBULAR



Wolverine Brass

PART #	VENDOR CODE	DESCRIPTION
50619	PPG	1-1/4" 17 GAUGE P-TRAP WITH MACHINED ROD BRASS NUTS SILVER SOLDERED THREAD CHROME

WATER PUMPS



Wolverine Brass

PART #	VENDOR CODE	DESCRIPTION
80745	PPG	THE BEAST STAINLESS STEEL SUMP PUMP, 1/2 HP

SAME-DAY DELIVERY

Get the job done FAST when Marcone's vast parts inventory is sent right to your jobsite with DoorDash-powered delivery.

Same-day delivery with DoorDash: **Fast. Easy. Done. That's Marcone.**

Available at select locations for qualifying products.



Search Products

Search for a product or part. Eligible items will note DoorDash delivery on the product detail page.



Add to Cart

Add items to your cart and proceed to checkout.



Checkout

At checkout, choose the DoorDash Delivery option and complete the transaction.



Order Summary

Your order summary will include a DoorDash tracking URL. You can also review tracking information on the Order tab in MyMarcone or via SMS updates.





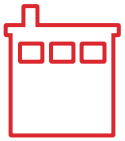
A smooth-running, profitable service business is all about having the right equipment, process and people in place. At Marcone, we believe that too. We are the leading supplier of genuine OEM appliance parts, HVAC parts and equipment, and plumbing supply parts with more than 125 years of industry experience.



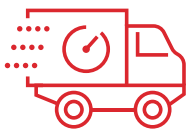
16 Regional Distribution Centers



120+ Local Branches



2.8 Million Square Feet of Warehouse Space



Orders in by **5pm** Ship Same Day

All this means Marcone can respond quickly and accurately to your needs, anytime.

- Same-Day or Next-Day to 93% of the US from a large inventory investment, including genuine OEM Parts
- Any order placed before 5 p.m. is shipped same day for ground delivery
- Open 8 a.m. - 7 p.m., 7 days / week
- Call agents in every time zone with access to predictive analytics and diagnosis
- 99.9% first time call completion



